

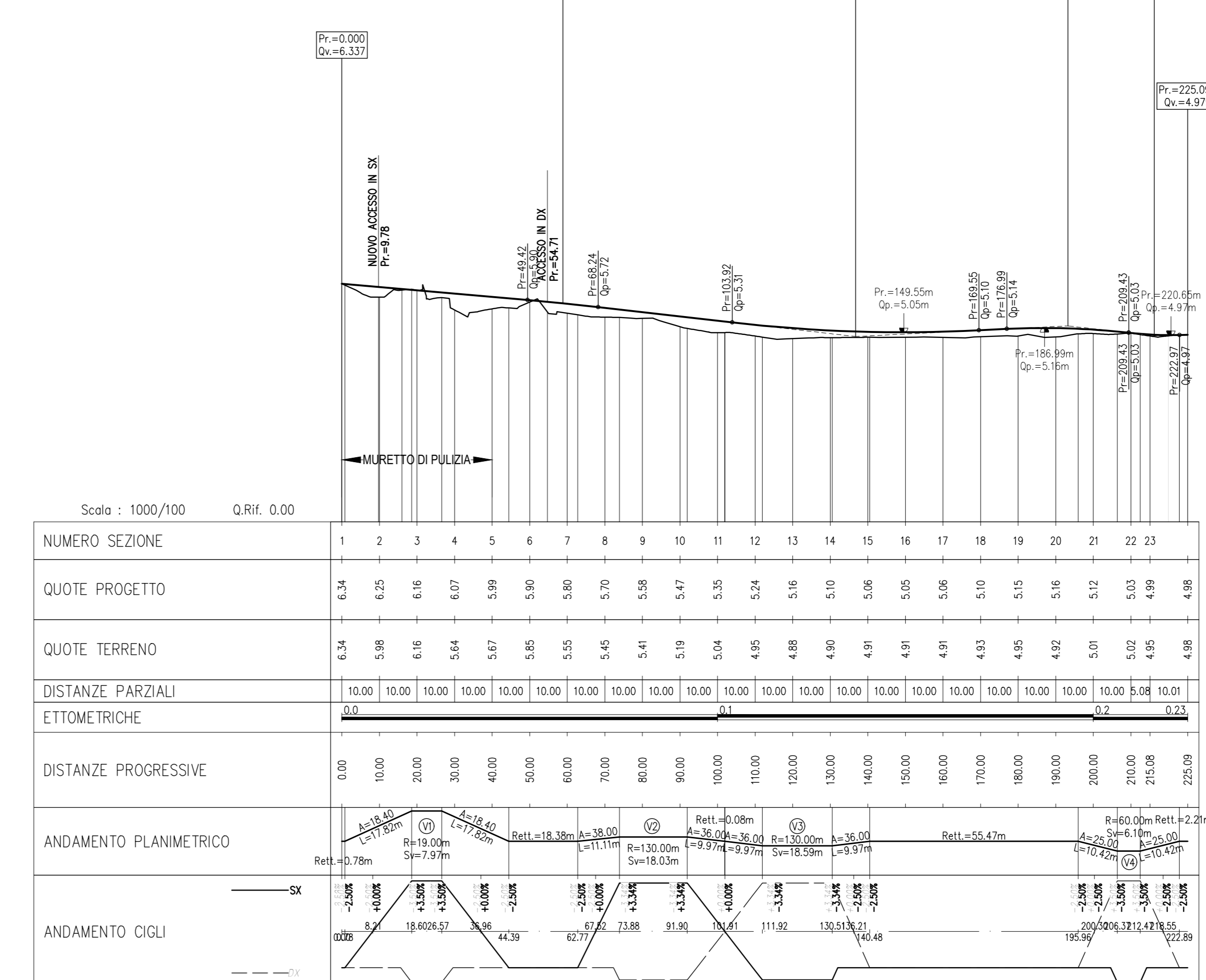
| NV03 | | | | | | | | | | |
|----------|-----------|-------------|-------------|-------------|-----------|-------------|-------------|---------|---|----------|
| ELEM. | LUNGHEZZA | Pr.(inizio) | EST | NORD | Pr.(Fine) | EST | NORD | RAGGIO | A | Aziut |
| Rett1 | 0,783 | 0,000 | 2454266,901 | 4698856,842 | 0,783 | 2454266,050 | 4698857,400 | | | 360,4027 |
| Curva #1 | 17,819 | 0,783 | 2454266,050 | 4698857,400 | 18,602 | 2454295,705 | 4698871,700 | 18,400 | | 360,2980 |
| Curva #1 | 7,888 | 18,602 | 2454295,705 | 4698871,700 | 26,570 | 2454294,942 | 4698879,600 | 18,800 | | 6,9947 |
| Curva #2 | 17,819 | 26,570 | 2454294,942 | 4698879,600 | 44,389 | 2454282,191 | 4698895,698 | 18,400 | | 36,8070 |
| Rett2 | 18,380 | 44,389 | 2454282,191 | 4698895,698 | 62,769 | 2454272,236 | 4698911,089 | | | 36,8070 |
| Curva #3 | 1,508 | 62,769 | 2454272,236 | 4698911,089 | 73,277 | 2454278,437 | 4698920,700 | 38,000 | | 39,2088 |
| Curva #2 | 18,005 | 73,277 | 2454278,437 | 4698920,700 | 91,982 | 2454289,905 | 469914,191 | 130,000 | | 48,3038 |
| Curva #4 | 9,989 | 91,982 | 2454289,905 | 469914,191 | 101,871 | 2454296,852 | 469941,242 | 36,000 | | 50,7948 |
| Rett3 | 0,077 | 101,871 | 2454296,852 | 469941,242 | 101,948 | 2454297,007 | 469941,296 | | | 50,7948 |
| Curva #5 | 9,989 | 101,948 | 2454297,007 | 469941,296 | 111,918 | 2454304,054 | 469964,347 | 36,000 | | 48,3038 |
| Curva #3 | 18,594 | 111,918 | 2454304,054 | 469964,347 | 130,512 | 2454315,851 | 469982,699 | 130,000 | | 39,2481 |
| Curva #6 | 9,989 | 130,512 | 2454315,851 | 469982,699 | 140,481 | 2454314,005 | 469970,977 | 36,000 | | 36,8070 |
| Rett4 | 0,788 | 140,481 | 2454314,005 | 469970,977 | 140,568 | 2454307,722 | 469971,438 | | | 36,8070 |
| Curva #7 | 10,417 | 140,568 | 2454307,722 | 469971,438 | 206,373 | 2454307,188 | 469924,317 | 25,000 | | 31,8008 |
| Curva #4 | 6,007 | 206,373 | 2454307,188 | 469924,317 | 212,470 | 2454309,757 | 469931,830 | 60,000 | | 24,8115 |
| Curva #8 | 10,417 | 212,470 | 2454309,757 | 469931,830 | 222,887 | 2454303,149 | 469901,675 | 25,000 | | 19,2953 |
| Rett5 | 2,206 | 222,887 | 2454303,149 | 469901,675 | 225,093 | 2454303,807 | 469903,781 | | | 19,2953 |

| NV03 V 0 | NV03 V 1 | NV03 V 2 | NV03 V 3 | NV03 V 4 | NV03 V 5 |
|-----------------------------------------------------------------------------|----------------------------------------------------------------------------|---------------------------------------------------------------------------|---------------------------------------------------------------------------|----------------------------------------------------------------------------|----------------------------------------------------------------------------|
| E=2454266,601 N=4698856,842 | E=2454248,681 N=4698874,992 | E=2454283,090 N=4698927,723 | E=2454310,843 N=4698954,793 | E=2454359,114 N=4699028,764 | E=2454363,907 N=4699043,781 |
| Δ=86,4014g Tl=24,722 Tt=24,722 | Δ=86,4014g Tl=19,862 Tt=19,862 | Δ=13,9878g Tl=19,862 Tt=19,862 | Δ=13,9878g Tl=19,862 Tt=19,862 | Δ=17,5218g Tl=13,527 Tt=13,527 | Δ=17,5218g Tl=13,527 Tt=13,527 |
| Clotilde 1 A=18,400 L=17,819 Tk=6,067 Tl=12,019 deltaR=0,691 | Clotilde 1 A=36,000 L=11,108 Tk=3,703 Tl=7,406 deltaR=0,040 | Clotilde 1 A=36,000 L=9,969 Tk=3,324 Tl=6,647 deltaR=0,032 | Clotilde 1 A=36,000 L=9,969 Tk=3,324 Tl=6,647 deltaR=0,032 | Clotilde 2 A=25,000 L=10,417 Tk=3,475 Tl=6,947 deltaR=0,075 | Clotilde 2 A=25,000 L=10,417 Tk=3,475 Tl=6,947 deltaR=0,075 |
| Curva 1 R=19,00 Sv=7,969 alfa=26,6967g T=4,043 | Curva 2 R=130,00 Sv=18,026 alfa=8,8270g T=9,027 | Curva 3 R=130,00 Sv=18,026 alfa=8,8270g T=9,027 | Curva 3 R=130,00 Sv=18,026 alfa=8,8270g T=9,027 | Curva 4 R=60,00 Sv=9,027 alfa=6,4693g T=3,051 | Curva 5 R=60,00 Sv=9,027 alfa=6,4693g T=3,051 |
| Clotilde 2 A=18,400 L=17,819 Tk=6,067 Tl=12,019 deltaR=0,691 | Clotilde 2 A=36,000 L=9,969 Tk=3,324 Tl=6,647 deltaR=0,032 | Clotilde 2 A=36,000 L=9,969 Tk=3,324 Tl=6,647 deltaR=0,032 | Clotilde 2 A=36,000 L=9,969 Tk=3,324 Tl=6,647 deltaR=0,032 | Clotilde 2 A=25,000 L=10,417 Tk=3,475 Tl=6,947 deltaR=0,075 | Clotilde 2 A=25,000 L=10,417 Tk=3,475 Tl=6,947 deltaR=0,075 |

| LIVELLE | L=58,83m a=-0,0081 Ar=-0,51m | L=77,90m a=-0,0164 Ar=-0,88m | L=56,48m a=-0,0162 Ar=-0,28m | L=22,99m a=-0,0112 Ar=-0,02m | L=8,89m a=-0,0212 Ar=-0,02m |
|---------------------|------------------------------------|------------------------------------|------------------------------------|------------------------------------|-----------------------------------|
| PROGRESSIVE VERTICI | 58,838 | 136,731 | 193,213 | 216,200 | |

Profilo Longitudinale NV03
Pr.=0,00 - Pr.= 225,09

| | | | |
|---------------------------------------------------------|------------------------------------------------------------|------------------------------------------------------------|------------------------------------------------------------|
| Pr=58,83 Qv=5,82 R=7043,071 T=18,82 F=-0,01 | Pr=136,73 Qv=4,93 R=14845,4 T=2000,000 F=-0,13 | Pr=193,21 Qv=5,52 R=14225,4 T=2000,000 F=-1,83 | Pr=216,20 Qv=4,96 R=13545,4 T=1000,000 F=-0,02 |
|---------------------------------------------------------|------------------------------------------------------------|------------------------------------------------------------|------------------------------------------------------------|



COMMITTENTE: **RFI** GRUPPO FERROVIARIO ITALIANO

PROGETTAZIONE: **ITALFERR** GRUPPO FERROVIARIO ITALIANO

DIREZIONE TECNICA
UO INFRASTRUTTURE CENTRO

PROGETTO DI FATTIBILITA' TECNICA ECONOMICA

VELOCIZZAZIONE DELLA LINEA ROMA - PESCARA
RADDOPPIO FERROVIARIO TRATTA PESCARA PORTA NUOVA-CHIETI
LOTTO 1 - TRATTA PESCARA PORTA NUOVA-PM SAN GIOVANNI TEATINO

NV03 - Viab. strad. di Via A. Volta dal km 1+618,529 al km 1+827,985
Planimetria di progetto e di tracciamento e Profilo di Progetto

SCALA: 1:1000

| Revis. | Descrizione | Redatto | Data | Verificato | Data | Approvato | Data | Autorizzato | Data |
|--------|---------------------|-----------|------------|-------------|------------|---------------|------------|-------------|------------|
| A | Emissione esecutiva | P.Luciani | 28/05/2019 | E. Leggieri | 29/05/2019 | T. Pignatelli | 30/05/2019 | F. Zucchi | 31/05/2019 |

File: I4S01020P/NV030001A.dwg n. Elab.: 19-27