

COMMITTENTE:



PROGETTAZIONE:



**U.O. ARCHITETTURA AMBIENTE E TERRITORIO**

**PROGETTO DI FATTIBILITA' TECNICA ED ECONOMICA**

**VELOCIZZAZIONE DELLA LINEA ROMA - PESCARA  
RADDOPPIO FERROVIARIO TRATTA PESCARA PORTA NUOVA - CHIETI**

STUDIO VIBRAZIONALE  
Report dei rilievi vibrometrici

SCALA

-

COMMESSA LOTTO FASE ENTE TIPO DOC. OPERA/DISCIPLINA Progr. REV.

IA4S 00 R 22 RH IM0004 002 A

Rev.	Descrizione	Redatto	Data	Verificato	Data	Approvato	Data	Autorizzato Data
A	Emissione esecutiva	E. Zola	Giugno 2023	A. Corvaja	Giugno 2023	T. Paoletti	Giugno 2023	C. Ercolani Giugno 2023

File: IA4S00R22RHIM0004002A.docx

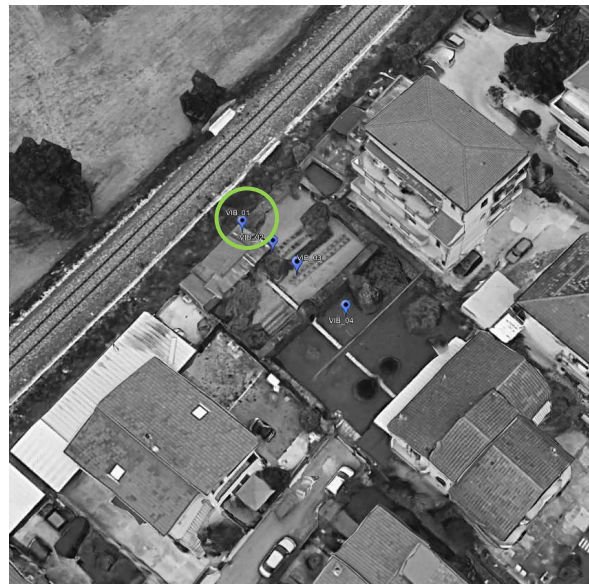
n. Elab.

<b>Punto di Misura:</b>	VIB_1	<b>Comune:</b>	San Giovanni Teatino
-------------------------	-------	----------------	----------------------

<b>Provincia:</b>	Chieti	<b>Regione:</b>	Abruzzo
-------------------	--------	-----------------	---------

<b>Coordinate Nord</b>	42°25'14.81"N	<b>Data/Ora Inizio</b>	30/03/2018 – 11:30
<b>Coordinate Est</b>	14°11'1.80"E	<b>Data/Ora Fine</b>	31/03/2018 – 11:30

<b>Distanza dall'asse</b>	7,0 m dal binario	<b>Altezza dal p.c.</b>	0 m dal piano campagna
---------------------------	-------------------	-------------------------	------------------------

**REPORT FOTOGRAFICO E ORTOFOTO AEREA**


Data	Ora	Durata passaggio [s]	Codice	Categoria	ASSE X - CH1																							
					Sintesi [dB - mm/s <sup>2</sup> ]				Leq - Frequenze [Hz] - Livelli [dB]																			
					L	L <sub>w</sub>	a	a <sub>w</sub>	1.0	1.3	1.6	2.0	2.5	3.2	4.0	5.0	6.3	8.0	10.0	12.5	16.0	20.0	25.0	31.5	40.0	50.0	63.0	80.0
30/05/2018	13:35:37	10.0	03220	REG	91.5	71.8	37.4	3.9	32.1	40.3	37.5	37.2	42.8	35.3	36.9	44.3	43.0	46.7	51.7	60.4	61.7	67.1	76.0	74.6	78.7	81.5	89.5	83.4
30/05/2018	13:29:19	7.0	10091	REG	92.9	73.3	44.3	4.6	40.5	40.7	40.3	41.1	45.0	33.0	38.2	45.4	46.8	54.2	57.5	59.6	59.3	64.5	68.9	70.5	79.8	89.1	88.9	84.1
30/05/2018	13:34:04	3.0	02914	REG	91.5	71.3	37.7	3.7	33.7	36.2	40.3	37.2	47.5	40.7	42.2	45.8	51.3	52.1	55.9	53.0	57.1	62.1	65.1	71.9	80.0	77.5	90.4	81.6
30/05/2018	13:15:57	6.0	03191	REG	101.5	80.9	119.1	11.0	45.6	38.2	41.5	39.9	39.3	39.8	41.4	44.9	40.4	48.3	47.9	63.6	71.5	68.7	73.8	74.0	85.2	91.1	100.3	92.5
30/05/2018	13:34:41	6.0	10293	REG	97.0	77.1	71.1	7.1	44.8	40.3	42.9	41.5	42.7	36.2	48.5	51.3	44.0	56.1	58.3	65.9	62.1	66.4	70.6	74.0	75.7	92.5	94.5	85.8
30/05/2018	13:46:24	5.0	03190	REG	101.4	80.6	117.2	10.7	29.5	40.1	36.5	31.0	42.6	36.5	40.3	45.2	45.1	50.8	50.6	66.4	68.0	64.9	69.9	70.2	82.4	88.6	100.7	90.2
30/05/2018	14:02:02	4.0	03200	REG	103.9	83.1	157.1	14.3	46.4	34.8	42.8	39.3	46.0	40.5	44.6	46.1	44.6	47.2	55.3	68.4	73.6	66.5	71.2	75.6	74.4	88.8	103.7	85.6
30/05/2018	14:24:50	5.0	10297	REG	101.1	80.3	113.9	10.4	48.0	43.2	46.2	43.3	27.3	40.4	38.2	45.9	44.8	44.9	54.8	63.8	67.7	63.0	68.1	67.8	70.4	88.3	100.8	83.9
30/05/2018	14:28:16	4.0	03202	REG	93.6	73.0	47.6	4.5	44.8	43.4	38.7	41.2	43.8	40.5	42.3	38.0	42.4	42.6	46.4	52.0	51.9	63.0	69.4	74.0	76.0	84.5	91.8	86.0
30/05/2018	14:44:01	5.0	10299	REG	103.6	82.7	151.7	13.6	37.7	37.5	43.7	45.9	44.4	43.3	42.7	50.4	44.7	48.9	59.9	70.1	70.2	70.4	69.3	69.1	71.8	82.3	103.4	89.6
30/05/2018	15:10:38	4.0	03204	REG	101.8	80.9	122.9	11.1	41.2	46.7	43.5	45.5	37.7	40.4	45.8	43.3	49.2	59.2	65.9	73.7	66.6	68.2	72.4	70.3	83.2	101.5	88.5	
30/05/2018	15:29:01	4.0	10210	REG	105.5	84.6	188.0	16.9	33.7	41.5	41.5	38.5	41.2	40.1	46.8	51.5	43.8	49.1	62.2	65.3	74.3	69.7	70.2	76.2	72.5	81.6	105.4	86.3
30/05/2018	16:10:21	3.0	03206	REG	102.5	81.6	133.8	12.0	31.0	34.3	38.5	39.9	40.8	33.7	36.2	40.5	44.7	51.4	63.3	65.5	71.6	68.2	69.1	72.7	71.8	83.5	102.2	90.1
30/05/2018	16:26:42	3.0	10219	REG	104.4	83.5	165.9	14.9	37.2	37.2	40.5	40.7	45.1	41.2	43.5	45.0	45.8	48.0	53.6	67.1	71.0	65.9	65.1	71.0	73.0	84.2	104.3	84.8
30/05/2018	16:57:02	4.0	10212	REG	96.0	76.0	63.1	6.3	38.0	38.5	31.0	34.8	38.2	39.9	35.8	41.7	45.3	47.6	56.8	62.9	61.0	64.8	68.6	66.4	71.7	92.4	92.7	85.4
30/05/2018	17:25:40	6.0	10211	REG	103.0	82.1	141.0	12.8	41.8	37.2	31.0	37.7	37.7	32.1	41.1	44.0	44.1	44.2	52.1	61.7	69.6	67.8	70.5	72.7	77.4	88.5	102.7	86.6
30/05/2018	17:42:11	3.0	03224	REG	107.1	86.3	226.5	20.7	40.9	38.9	44.6	39.9	39.1	41.4	42.2	44.2	46.1	45.3	57.9	67.0	72.6	66.7	72.6	75.2	75.5	94.8	106.8	85.0
30/05/2018	18:06:05	5.0	03210	REG	100.3	79.6	104.0	9.5	35.8	27.3	41.8	37.2	41.6	39.8	39.6	43.8	43.8	46.3	57.6	62.3	72.0	63.9	64.9	66.2	70.9	87.0	100.0	84.3
30/05/2018	18:33:40	4.0	10203	REG	107.4	86.5	235.3	21.1	40.1	38.7	37.7	38.2	43.3	37.2	48.7	51.9	45.0	46.2	61.7	63.9	74.7	70.7	71.8	76.4	74.4	86.6	107.3	90.3
30/05/2018	19:04:06	4.0	03214	REG	108.5	87.7	266.8	24.3	33.7	42.8	44.9	29.5	37.7	34.8	39.8	40.8	47.0	46.5	58.7	66.9	76.8	70.8	72.5	78.2	78.9	95.9	108.2	90.0
30/05/2018	19:24:03	5.0	10210	REG	95.7	75.9	61.2	6.2	43.4	39.3	41.2	36.5	43.1	37.7	41.8	43.7	45.1	53.8	60.2	60.7	62.1	70.2	66.9	73.0	92.4	92.2	84.8	
30/05/2018	19:58:30	5.0	03206	REG	106.3	85.4	206.5	18.7	38.5	40.1	32.1	35.8	41.2	41.6	47.4	46.1	44.3	46.5	55.6	64.6	71.0	67.4	68.0	74.3	77.0	92.0	106.1	83.7
30/05/2018	20:29:09	5.0	10215	REG	108.4	87.4	261.8	23.5	34.3	40.4	35.3	40.8	46.7	33.7	45.5	46.2	44.8	45.4	54.7	63.3	70.6	71.8	69.7	72.4	71.7	88.4	108.3	82.5
30/05/2018	20:59:34	3.0	10216	REG	102.7	82.4	136.8	13.2	40.9	27.3	40.5	39.9	42.4	41.3	50.2	40.8	40.9	49.3	55.2	63.7	68.0	68.5	74.9	73.5	77.8	97.0	101.2	86.0
30/05/2018	21:25:09	5.0	10217	REG	96.3	76.3	65.6	6.5	35.8	46.1	37.5	40.4	43.7	35.8	38.7	45.7	44.1	54.2	60.2	60.7	59.3	61.5	67.1	67.5	71.3	92.2	93.7	84.3
30/05/2018	22:08:22	8.0	03218	REG	102.3	81.7	130.7	12.2	40.5	48.9	29.5	27.3	43.6	36.5	49.7	50.2	38.7	46.9	59.3	58.8	67.6	65.1	68.1	71.5	76.9	94.1	101.4	88.0
30/05/2018	22:35:16	5.0	10210	REG	96.4	76.3	65.7	6.5	37.5	37.2	40.7	41.5	42.6	37.7	41.3	44.7	45.8	49.0	57.8	58.5	58.6	66.7	70.0	71.2	85.3	88.3	94.8	84.1
31/05/2018	05:31:28	3.0	03225	REG	108.9	88.0	279.8	25.3	33.7	44.8	43.5	39.1	45.9	41.9	42.3	52.6	48.0	46.2	60.4	64.7	75.9	70.9	77.0	77.9	83.9	92.7	108.7	92.7
31/05/2018	06:25:59	3.0	03184	REG	104.5	83.6	168.0	15.1	27.3	42.5	34.3	43.3	40.1	34.8	29.5	41.1	40.7	48.7	54.1	68.9	71.2	69.9	66.4	68.5	70.5	83.9	104.4	85.8
31/05/2018	07:07:57	4.0	03217	REG	99.0	78.1	89.4	8.1	37.7	43.1	36.5	39.1	38.2	38.9	44.3	42.1	41.9	46.5	52.8	61.0	65.4	57.9	63.0	65.0	71.3	81.0	98.9	79.4
31/05/2018	07:11:10	7.0	03186	REG	90.1	70.0	31.9	3.1	36.5	49.3	39.4	27.3	40.9	31.0	44.8	42.5	44.0	54.6	50.5	50.9	58.3	67.8	65.9	68.6	81.0	76.2	86.7	85.6
31/05/2018	07:26:18	5.0	06061	TCS	107.3	86.8	231.0	21.8	46.5	40.4	37.2	41.9	42.8	40.7	48.0	45.4	52.7	56.6	70.3	67.2	67.1	73.1	77.2	82.1	89.6	99.2	106.0	96.1
31/05/2018	07:39:43	8.0	03227	REG	100.9	79.6	110.5	9.6	27.3	45.9	39.3	38.0	38.2	41.4	36.5	42.5	33.7	44.2	49.1	50.7	59.2	61.0	64.8	70.5	77.2	81.5	99.8	93.9
31/05/2018	07:43:56	3.0	03188	REG	99.0	78.1	89.5	8.1	43.0	41.9	39.1	41.4	47.0	39.4	33.7	42.5	43.6	45.6	50.8	51.3	59.6	65.7	69.9	70.8	81.8	85.8	98.0	90.6
31/05/2018	08:08:49	5.0	03190	REG	99.4	78.6	93.7	8.5	44.7	41.2	34.3	36.9	45.9	32.1	33.0	45.0	41.5	46.9	52.4	63.4	67.6	63.3	63.2	65.8	70.0	85.1	99.1	84.7
31/05/2018	08:25:41	6.0	03219	REG	110.9	90.0	352.5	31.5	37.2	40.5	33.7	33.7	44.1	34.3	45.5	47.7	45.3	45.4	57.4	64.2	71.4	71.9	70.0	73.3	79.9	86.8	110.9	87.6
31/05/2018	08:29:03	5.0	03216	REG	95.5	74.5	59.9	5.3	27.3	36.2	41.1	33.0	41.6	33.0	27.3	29.5	47.3	48.3	44.3	50.8	60.2	65.8	71.0	77.3	76.6	82.7	92.8	91.4
31/05/2018	08:57:38	5.0	10243	REG	109.9	89.0	314.1	28.3	31.0	44.1	33.7	39.9	42.2	36.5	48.4	54.8	45.2	48.6	61.8	66.0	77.8	75.7	75.6	79.6	82.1	93.0	109.7	94.7
31/05/2018	09:00:49	6.0	03208	REG	91.0	70.6	35.4	3.4	22.5	34.8	38.9	45.4	47.7	29.5	38.2	42.6	45.9	53.1	53.5	51.8	61.4	64.4	67.8	69.0	80.9	75.4	88.2	86.2
31/05/2018	09:32:35	3.0	03209	REG	110.0	89.0	314.9	28.3	45.7	36.5	51.1	48.1	44.0	41.1	46.7	46.8	46.5	48.6	60.4	66.9	77.5	72.8	75.2	75.8	76.8	90.6	109.8	93.7
31/05/2018	09:44:48	3.0	03282	REG	101.8	80.9	122.5	11.0	44.2	43.7	41.2	41.7	37.7	40.9	42.4	44.6	44.1	50.7	58.4	67.4	68.9	69.8	70.3	72.4	78.4	85.8	101.2	91.2
31/05/2018	10:24:27	3.0	02919	REG	101.0	80.0	112.4	10.0	43.9	45.0	47.1	43.7	42.3	40.3	40.9	39.4	47.0	48.5	58.3	59.2	64.9	61.3	70.1	68.7	74.0	89.8	99.6	94.0

# MISURE DI CARATTERIZZAZIONE VIBRAZIONALE

Data	Ora	Durata passaggio [s]	Codice	Categoria	ASSE Y - CH2																							
					Sintesi [dB - mm/s <sup>2</sup> ]				Leq - Frequenze [Hz] - Livelli [dB]																			
					L	L <sub>w</sub>	a	a <sub>w</sub>	1.0	1.3	1.6	2.0	2.5	3.2	4.0	5.0	6.3	8.0	10.0	12.5	16.0	20.0	25.0	31.5	40.0	50.0	63.0	80.0
30/05/2018	1935:37	10.0	03220	REG	94,7	75,0	54,1	5,7	36,5	38,5	37,2	36,9	41,6	40,7	48,9	57,3	50,2	48,1	54,2	65,5	64,8	69,9	81,4	77,5	72,0	79,6	93,3	86,7
30/05/2018	E:25:19	7,0	10091	REG	92,9	73,1	44,4	4,5	34,8	46,6	34,3	42,6	45,6	37,5	50,5	48,8	50,9	59,4	65,3	65,9	62,3	68,2	68,7	73,9	73,3	84,0	91,6	83,1
30/05/2018	E:24:24	3,0	02914	REG	94,0	74,2	50,1	5,1	39,3	43,7	36,9	40,1	37,7	27,3	37,7	47,7	56,4	64,1	65,8	61,8	68,5	69,1	73,8	74,0	77,8	75,4	93,3	83,2
30/05/2018	E:10:57	6,0	03181	REG	102,9	82,4	140,2	13,1	43,4	44,3	38,2	37,7	44,9	41,5	43,4	49,2	51,8	54,6	56,2	72,5	76,0	71,5	74,9	73,6	76,7	92,4	102,2	90,6
30/05/2018	E:23:41	6,0	10093	REG	98,0	77,9	79,6	7,9	37,2	45,4	42,9	36,5	47,6	48,3	56,5	60,9	48,9	62,9	67,3	70,1	66,1	70,6	73,0	74,1	76,7	89,4	96,9	86,4
30/05/2018	E:46:24	5,0	03183	REG	103,1	82,5	142,6	13,3	40,3	37,2	37,7	43,5	44,4	42,5	44,8	51,8	55,0	55,0	58,6	73,4	75,2	69,6	77,5	74,2	72,3	89,5	102,7	88,1
30/05/2018	H:02:02	4,0	03200	REG	105,7	85,4	192,8	18,6	38,9	38,7	43,1	38,2	47,5	43,1	49,6	52,6	51,5	59,0	67,3	78,8	83,3	69,3	76,3	81,3	71,7	90,0	105,5	82,7
30/05/2018	H:24:50	5,0	10097	REG	102,5	81,9	133,4	12,5	37,7	47,7	40,9	38,7	43,3	41,7	45,5	51,7	50,5	54,0	62,8	73,8	73,9	69,1	73,8	70,0	69,3	89,5	102,2	82,9
30/05/2018	H:28:16	4,0	03202	REG	95,2	74,6	57,3	5,4	36,2	47,6	43,8	35,8	44,0	40,5	27,3	49,2	46,8	45,9	53,9	61,5	61,2	67,2	73,5	78,3	72,7	80,9	94,1	86,7
30/05/2018	H:44:01	5,0	10099	REG	106,2	85,5	204,8	18,9	36,2	36,5	40,9	40,1	27,3	40,9	41,9	54,3	57,3	53,8	69,2	79,2	74,0	74,1	74,8	72,7	72,0	83,9	106,1	88,8
30/05/2018	H:10:38	4,0	03204	REG	102,8	82,7	138,5	13,7	37,7	49,6	35,8	41,8	44,7	38,2	48,7	46,7	49,4	54,3	62,5	74,5	83,1	76,4	71,5	75,5	70,2	82,2	102,6	86,7
30/05/2018	E:29:01	4,0	10101	REG	108,2	87,3	255,9	23,2	39,3	40,7	41,9	37,5	45,2	40,4	52,9	55,8	59,3	55,8	71,9	68,5	75,3	74,3	79,6	77,4	74,1	82,7	108,1	86,6
30/05/2018	H:02:21	3,0	03206	REG	103,2	82,9	144,0	14,0	31,0	44,2	42,9	41,6	46,1	38,7	37,7	54,7	50,8	51,8	68,0	75,3	82,1	75,0	71,4	76,7	70,3	82,8	102,9	88,7
30/05/2018	E:26:42	3,0	10109	REG	106,0	85,3	199,2	18,3	38,2	45,7	27,3	40,9	38,2	43,0	44,9	51,3	54,8	60,1	66,4	76,8	77,2	72,0	71,0	72,2	70,7	84,8	105,9	85,0
30/05/2018	E:57:02	4,0	10192	REG	96,4	77,0	66,2	7,1	39,8	44,4	34,8	39,1	40,5	31,0	43,7	47,0	48,9	52,9	66,6	75,3	69,4	68,3	74,8	71,7	69,3	91,1	93,8	87,7
30/05/2018	F:25:40	6,0	10111	REG	104,5	83,8	168,8	15,5	41,4	45,5	41,3	37,7	39,4	41,2	43,1	53,6	53,3	55,0	57,8	73,4	74,3	68,8	71,8	72,0	70,9	90,2	104,3	86,3
30/05/2018	F:42:11	3,0	03204	REG	108,3	87,8	261,5	24,5	47,7	41,8	39,6	42,0	48,4	46,4	55,5	57,3	49,6	56,9	70,2	77,0	82,8	72,4	77,3	73,0	95,0	108,1	84,0	
30/05/2018	E:06:05	5,0	03210	REG	101,5	81,3	118,7	11,7	27,3	36,5	43,1	41,3	27,3	37,7	44,0	41,1	45,6	51,1	62,3	75,3	80,7	67,4	75,0	71,4	69,2	86,3	101,2	84,4
30/05/2018	E:33:40	4,0	10103	REG	110,7	89,7	342,1	30,7	41,1	42,4	33,7	39,3	43,1	43,3	55,9	61,6	58,5	55,0	67,3	68,6	76,8	73,0	75,8	74,4	73,8	88,3	110,6	91,3
30/05/2018	E:04:06	4,0	03214	REG	110,4	89,8	331,6	30,8	42,6	41,8	36,2	38,0	41,6	44,2	51,9	55,0	55,1	59,7	67,6	73,6	84,9	74,5	74,9	80,7	76,1	98,1	110,1	87,7
30/05/2018	E:24:03	5,0	10110	REG	95,5	75,9	59,5	6,2	38,7	34,3	22,5	40,3	46,2	29,5	48,1	47,5	50,1	58,0	66,5	69,2	71,6	70,3	73,2	69,0	69,7	90,4	92,7	87,0
30/05/2018	E:58:30	5,0	03226	REG	108,2	87,5	256,6	23,8	38,7	44,0	41,7	39,8	44,4	41,9	57,1	56,5	48,0	57,5	70,2	76,1	82,3	70,0	75,2	75,5	71,8	93,3	108,0	85,0
30/05/2018	20:29:09	5,0	10116	REG	110,7	89,7	341,0	30,7	43,1	43,7	43,3	41,2	40,8	43,6	46,4	49,0	54,8	56,9	60,8	72,1	77,5	69,7	70,5	73,8	72,8	90,6	110,6	82,9
30/05/2018	20:59:34	3,0	10106	REG	104,0	84,2	157,9	16,2	45,1	43,8	31,0	43,2	40,9	46,3	60,3	58,2	44,9	55,9	71,0	80,2	80,3	74,3	77,3	74,1	74,1	96,6	102,9	87,1
30/05/2018	21:25:09	5,0	10107	REG	96,1	76,3	63,5	6,6	37,2	39,3	33,0	38,5	37,7	36,2	48,0	52,9	48,0	57,7	68,1	68,4	71,4	72,5	70,8	69,0	70,0	90,2	93,9	86,6
30/05/2018	22:08:22	8,0	03218	REG	104,5	84,3	168,7	16,3	29,5	44,6	45,3	42,7	42,6	43,5	59,0	58,8	47,6	55,4	71,1	76,6	79,7	67,2	72,3	75,0	75,4	95,4	103,8	88,8
30/05/2018	22:35:16	5,0	10110	REG	97,1	77,3	71,6	7,3	41,8	34,8	38,0	27,3	29,5	43,6	40,5	48,6	44,2	61,6	71,1	66,5	63,5	75,5	79,5	76,9	76,5	81,9	96,3	86,7
31/05/2018	05:51:28	3,0	03225	REG	110,7	89,8	342,4	30,9	32,1	41,2	43,3	42,6	45,1	41,8	52,5	55,5	58,4	55,0	66,8	73,3	78,0	72,1	78,0	80,9	78,8	93,4	110,5	94,0
31/05/2018	06:25:59	3,0	03184	REG	105,4	84,8	186,7	17,3	38,2	41,2	36,5	40,8	42,3	39,3	43,5	45,0	47,3	56,5	66,5	72,7	80,8	72,3	75,0	75,5	68,7	83,6	105,3	87,2
31/05/2018	07:07:57	4,0	03217	REG	99,0	78,2	88,6	8,1	39,6	29,5	37,5	36,5	37,2	39,6	39,6	41,1	47,3	53,8	59,7	67,7	66,9	60,1	66,4	68,2	63,0	81,7	98,8	79,9
31/05/2018	07:10:00	7,0	03186	REG	90,0	71,2	31,7	3,6	39,3	27,3	31,0	41,6	41,2	32,1	37,7	42,3	48,3	62,1	62,0	60,7	65,9	74,9	70,0	70,6	79,4	73,8	87,0	85,2
31/05/2018	07:26:18	5,0	05601	TCS	107,5	87,1	236,8	22,6	29,5	38,7	33,7	40,1	50,0	46,9	51,8	52,4	58,0	67,7	78,4	73,8	72,8	79,7	80,3	81,5	86,6	96,0	106,8	95,2
31/05/2018	07:39:43	8,0	03227	REG	101,8	80,5	122,3	10,7	39,9	46,1	27,3	38,2	43,4	32,1	38,7	41,8	40,1	43,7	51,5	56,1	64,2	66,5	71,6	71,2	73,2	81,3	100,8	94,4
31/05/2018	07:43:56	3,0	03188	REG	100,0	79,3	100,5	9,2	41,4	37,5	33,7	44,3	32,1	31,0	39,9	44,2	51,2	53,6	60,5	58,5	65,0	73,8	77,2	78,4	79,5	83,3	99,1	91,8
31/05/2018	08:08:49	5,0	03190	REG	99,4	79,4	93,8	9,4	32,1	47,9	29,5	32,1	40,1	34,8	39,4	46,6	43,6	56,2	61,9	74,3	78,6	69,6	74,6	72,6	68,6	84,7	99,1	83,1
31/05/2018	08:25:41	6,0	03219	REG	112,1	91,2	404,4	36,2	40,5	22,5	35,8	39,8	43,1	39,1	45,2	50,9	55,8	52,2	59,5	68,4	76,6	70,9	73,4	75,4	75,0	87,6	112,1	88,1
31/05/2018	08:29:03	5,0	03216	REG	95,6	75,1	60,4	5,7	41,1	37,7	27,3	33,0	37,7	38,9	37,5	36,2	55,1	58,7	55,6	58,6	64,6	69,9	79,4	76,6	71,6	79,1	93,0	91,5
31/05/2018	08:57:38	5,0	10143	REG	111,6	90,8	379,4	34,6	44,4	38,5	27,3	41,9	41,3	44,9	58,8	62,6	56,3	56,3	72,4	73,4	80,6	83,8	81,3	85,0	79,3	92,3	111,4	95,2
31/05/2018	09:00:49	6,0	03208	REG	89,9	70,5	31,4	3,3	35,8	42,6	34,3	36,5	46,1	36,5	40,1	41,5	52,7	61,0	63,5	57,6	67,9	67,9	71,0	70,7	78,0	71,5	87,1	85,5
31/05/2018	09:32:35	3,0	03229	REG	111,6	90,7	381,0	34,2	38,7	40,1	40,7	42,2	37,7	36,9	47,9	53,3	59,5	57,8	67,5	71,5	78,6	75,3	77,4	78,7	74,6	90,6	111,5	93,9
31/05/2018	09:44:48	3,0	03682	REG	59,0	81,5	0,9	11,8	39,4	38,0	31,0	38,5	44,4	36,5	38,0	43,9	42,2	47,0	50,3	53,4	49,2	43,8	47,3	45,1	44,3	40,1	47,8	44,4
31/05/2018	E:24:27	3,0	02910	REG	101,7	81,0	122,2	11,2	40,3	34,3	45,6	33,0	44,2	39,6	49,3	56,1	53,5	54,3	70,2	72,0	68,9	66,4	73,4	70,2	71,3	88,0	101,0	92,1

# MISURE DI CARATTERIZZAZIONE VIBRAZIONALE

Data	Ora	Durata passaggio [s]	Codice	Categoria	ASSE Z - CH3																							
					Sintesi [dB - mm/s²]				Leq - Frequenze [Hz] - Livelli [dB]																			
					L	L <sub>w</sub>	a	a <sub>w</sub>	1.0	1.3	1.6	2.0	2.5	3.2	4.0	5.0	6.3	8.0	10.0	12.5	16.0	20.0	25.0	31.5	40.0	50.0	63.0	80.0
30/05/2018	11:35:37	10.0	03220	REG	91.3	75.0	36.8	5.7	60.4	65.0	66.9	56.1	57.4	57.3	58.1	56.3	54.3	50.5	51.2	56.3	64.7	70.6	78.9	75.6	85.2	82.8	87.5	81.0
30/05/2018	12:29:19	7.0	10291	REG	89.5	73.6	30.0	4.8	56.6	60.1	65.8	56.9	55.6	57.7	60.6	54.8	55.9	56.3	67.4	63.4	62.0	67.6	69.1	72.8	82.4	87.3	78.3	78.4
30/05/2018	12:34:34	3.0	02914	REG	87.8	73.1	24.6	4.5	66.3	61.3	56.7	62.1	55.2	55.1	52.9	56.9	50.2	59.5	60.0	52.8	63.5	66.9	66.5	70.0	86.2	74.0	79.5	76.1
30/05/2018	13:30:57	6.0	03181	REG	94.4	77.5	52.3	7.5	60.9	63.9	66.4	59.8	50.0	58.0	53.8	54.6	53.8	53.1	58.5	75.3	75.3	66.6	75.3	78.2	89.3	85.6	89.5	86.5
30/05/2018	13:34:41	6.0	10293	REG	91.1	74.4	35.9	5.3	57.0	57.9	62.1	59.7	55.5	51.4	58.7	56.2	52.9	58.8	60.2	72.7	68.5	67.5	73.0	77.5	80.2	89.3	81.2	79.2
30/05/2018	14:46:24	5.0	03183	REG	92.8	75.5	43.5	6.0	64.7	63.0	60.9	57.1	59.6	58.6	53.5	53.9	51.6	54.2	58.8	73.7	71.9	60.9	67.3	71.0	85.7	82.9	90.2	83.3
30/05/2018	14:02:02	4.0	03200	REG	92.4	76.2	41.8	6.5	69.0	66.9	65.5	58.2	57.3	53.8	56.2	55.7	50.8	53.7	65.7	74.6	76.0	67.6	71.7	75.3	78.3	78.7	91.3	80.5
30/05/2018	14:24:50	5.0	10297	REG	89.0	73.1	28.3	4.5	62.2	60.6	58.0	54.9	49.3	53.1	56.5	55.0	49.8	49.8	59.8	75.3	69.1	67.4	69.6	69.3	74.9	78.9	87.5	77.6
30/05/2018	14:28:16	4.0	03202	REG	86.9	73.2	22.2	4.5	67.8	58.9	65.5	59.0	59.1	59.8	50.7	53.8	56.4	54.1	54.1	53.5	57.4	65.7	69.2	77.3	79.6	82.0	78.3	79.7
30/05/2018	14:44:01	5.0	10299	REG	92.9	77.2	44.1	7.2	65.2	66.9	62.8	59.5	54.1	54.7	57.8	48.7	55.4	54.9	62.2	79.7	76.2	68.6	70.7	70.7	75.0	76.8	91.7	83.1
30/05/2018	15:10:38	4.0	03204	REG	90.9	74.7	35.2	5.4	58.5	68.2	59.7	52.9	48.6	57.6	56.9	57.7	55.7	52.1	63.5	73.6	74.4	68.7	70.6	73.4	74.4	75.0	89.8	80.7
30/05/2018	15:29:01	4.0	10211	REG	95.3	77.3	58.2	7.4	62.7	68.5	61.9	64.0	55.3	56.8	60.2	63.6	53.7	54.5	64.3	70.3	76.6	70.7	74.0	73.2	76.0	76.5	94.9	79.2
30/05/2018	15:32:21	3.0	03206	REG	91.4	74.2	37.2	5.1	60.4	59.4	55.8	60.6	54.7	56.0	52.4	59.4	59.1	53.0	65.9	74.0	72.1	71.9	68.1	74.1	76.0	75.6	90.0	83.2
30/05/2018	15:26:42	3.0	10219	REG	92.1	76.2	40.3	6.4	58.8	66.0	58.5	59.0	60.9	58.4	54.7	53.3	54.4	56.3	58.5	78.3	76.5	67.8	69.8	72.1	74.5	75.9	91.3	77.3
30/05/2018	15:57:02	4.0	10232	REG	89.8	73.8	30.8	4.9	67.5	61.5	61.1	60.2	49.8	53.0	57.7	56.8	56.2	54.9	61.7	65.6	66.9	65.0	68.0	70.8	78.6	87.4	83.3	78.4
30/05/2018	17:25:40	6.0	10211	REG	91.6	75.3	37.9	5.8	67.6	64.4	56.8	57.5	54.3	60.8	59.0	54.2	52.9	55.0	56.5	74.1	73.8	64.2	72.0	72.6	80.1	80.0	90.1	80.5
30/05/2018	17:42:11	3.0	03234	REG	95.4	76.3	59.0	6.6	57.1	55.0	58.8	60.8	47.6	54.8	56.5	53.9	56.7	52.5	66.0	72.8	74.0	66.0	72.0	75.1	80.0	83.2	94.7	80.6
30/05/2018	18:06:05	5.0	03210	REG	90.0	74.4	31.6	5.3	68.1	63.5	56.8	61.5	53.2	53.4	55.8	55.0	57.4	53.6	61.8	71.7	74.5	66.7	68.2	70.4	76.5	78.4	88.6	79.1
30/05/2018	18:33:40	4.0	10213	REG	96.4	78.4	66.3	8.3	71.2	62.2	66.4	63.4	55.8	50.4	58.4	56.3	53.2	52.8	63.1	67.4	77.2	69.8	74.4	74.8	79.6	81.4	95.8	83.2
30/05/2018	19:04:06	4.0	03214	REG	95.4	77.0	58.7	7.1	62.5	63.0	60.9	60.3	57.2	59.1	57.0	50.7	53.1	49.7	62.8	71.0	75.8	73.2	74.6	80.5	81.1	83.9	94.2	83.4
30/05/2018	19:24:03	5.0	10213	REG	88.0	72.7	25.0	4.3	57.2	44.0	59.6	58.3	63.6	59.3	59.2	51.3	53.8	55.8	66.3	72.0	66.9	64.5	69.7	68.6	77.2	85.3	81.3	76.8
30/05/2018	19:58:30	5.0	03226	REG	95.4	76.5	58.7	6.7	65.6	56.3	62.6	57.2	58.2	58.4	54.5	55.6	51.7	52.3	67.0	71.0	71.2	66.7	69.8	75.2	80.4	82.4	94.8	77.1
30/05/2018	20:29:09	5.0	10215	REG	95.8	76.5	61.8	6.7	60.6	59.5	60.3	60.7	59.2	54.9	58.8	52.2	52.4	49.2	59.7	66.2	75.6	68.3	66.7	74.5	77.0	82.5	95.4	75.2
30/05/2018	20:59:34	3.0	10216	REG	94.3	76.1	51.8	6.4	62.0	60.5	61.9	56.2	57.0	49.9	61.9	59.5	50.6	53.4	67.1	68.3	71.9	72.7	71.5	72.0	83.4	87.6	92.4	78.3
30/05/2018	21:25:09	5.0	10217	REG	88.0	74.9	25.2	5.6	71.3	61.6	60.2	61.7	56.2	54.2	48.0	51.5	54.1	55.6	66.4	71.6	67.0	68.3	69.8	68.1	76.6	85.2	82.1	74.5
30/05/2018	22:08:22	8.0	03218	REG	94.5	76.3	53.3	6.5	62.3	60.7	67.8	58.4	55.8	56.3	56.8	56.5	51.6	47.7	68.3	67.4	68.3	63.9	67.5	73.2	83.5	86.1	93.1	80.2
30/05/2018	22:35:16	5.0	10210	REG	91.6	76.0	38.0	6.3	67.9	61.6	66.9	63.4	59.4	51.9	54.9	54.2	52.5	61.1	63.2	60.2	64.3	69.3	73.4	70.3	86.2	88.9	81.6	76.2
31/05/2018	05:51:28	3.0	03225	REG	98.9	80.5	87.9	10.6	56.6	69.2	66.4	60.8	59.2	54.8	53.7	55.8	53.0	50.9	64.1	71.3	80.5	70.9	78.0	82.3	88.4	88.7	97.3	87.2
31/05/2018	06:25:59	3.0	03184	REG	91.0	72.6	35.6	4.3	55.2	53.2	58.0	53.8	53.9	53.1	48.8	51.4	51.8	49.0	62.6	71.4	70.1	69.2	68.3	71.1	75.9	76.0	90.4	75.3
31/05/2018	07:07:57	4.0	03217	REG	88.1	71.9	25.3	4.0	67.2	47.5	51.6	59.1	58.2	57.1	55.1	50.2	47.7	50.9	51.8	68.9	68.0	51.9	59.5	63.7	75.8	75.0	87.3	69.7
31/05/2018	07:11:10	7.0	03186	REG	88.6	73.2	26.8	4.6	59.2	63.1	61.0	54.8	63.1	57.0	49.7	55.3	46.4	59.2	57.5	53.2	59.1	69.0	64.9	69.4	87.5	75.9	76.5	76.5
31/05/2018	07:28:18	5.0	65661	TCS	100.7	82.8	108.0	13.9	67.5	42.5	53.7	58.6	56.1	59.4	54.9	53.4	60.4	64.3	76.4	71.7	71.5	75.4	76.0	86.0	94.7	97.2	93.9	86.6
31/05/2018	07:39:43	8.0	03227	REG	89.5	72.2	29.8	4.1	63.1	61.5	58.6	60.6	50.8	51.6	50.8	55.8	47.3	47.7	49.0	53.3	61.3	62.3	65.7	69.4	83.7	79.5	85.9	81.8
31/05/2018	07:43:56	3.0	03188	REG	92.2	75.3	40.9	5.8	56.2	58.1	63.2	56.6	54.2	56.4	53.9	55.2	53.5	55.2	54.2	53.7	65.5	70.0	72.1	75.5	90.2	82.6	84.9	78.1
31/05/2018	08:08:49	5.0	03190	REG	89.8	73.2	30.9	4.6	63.3	56.6	63.5	63.4	59.3	59.4	57.0	53.7	48.8	52.2	60.4	68.6	70.6	65.8	70.1	70.0	74.3	77.8	88.9	75.5
31/05/2018	08:25:41	6.0	03219	REG	97.9	78.3	78.5	8.2	60.9	59.6	62.3	62.9	46.3	59.7	57.1	49.3	51.4	50.8	61.1	67.9	75.2	67.6	68.8	74.3	84.9	82.6	97.4	79.2
31/05/2018	08:29:03	5.0	03218	REG	87.4	72.3	23.6	4.1	58.2	64.9	60.5	60.4	55.8	56.0	58.4	49.5	54.3	58.5	51.0	53.7	64.2	67.1	73.5	76.9	80.8	81.7	81.2	78.3
31/05/2018	08:57:58	5.0	10243	REG	98.5	80.1	84.2	10.1	67.9	60.4	67.2	57.6	58.1	49.9	62.9	58.2	52.8	50.3	64.6	70.1	78.7	76.6	77.4	83.9	86.2	88.4	97.1	86.1
31/05/2018	09:00:49	6.0	03208	REG	88.2	75.1	25.8	5.7	66.1	64.5	69.5	61.1	56.9	56.4	60.1	54.6	53.8	60.4	56.3	52.9	62.7	68.6	70.2	72.0	86.8	74.1	78.2	75.9
31/05/2018	09:32:35	3.0	03229	REG	97.3	78.7	73.0	8.6	63.2	68.5	59.3	60.9	53.7	57.1	57.7	55.9	55.6	50.8	64.1	70.4	79.5	70.7	75.4	78.0	83.0	83.5	96.3	86.1
31/05/2018	09:44:48	3.0	03682	REG	91.2	74.7	36.1	5.5	63.5	52.9	65.8	63.2	57.7	54.4	58.0	59.8	56.1	53.1	62.3	70.5	71.5	65.2	72.9	74.3	84.2	79.3	88.5	82.1
31/05/2018	10:24:27	3.0	02910	REG	89.4	73.1	29.4	4.5	52.0	61.7	62.7	63.7	52.1	57.8	55.7	59.9	56.0	51.4	62.1	70.0	68.0	67.6	72.7	69.7	79.7	83.3	84.7	83.1

<b>Punto di Misura:</b>	VIB_2	<b>Comune:</b>	San Giovanni Teatino
-------------------------	-------	----------------	----------------------

<b>Provincia:</b>	Chieti	<b>Regione:</b>	Abruzzo
-------------------	--------	-----------------	---------

<b>Coordinate Nord</b>	42°25'14.71"N	<b>Data/Ora Inizio</b>	30/03/2018 – 12:00
<b>Coordinate Est</b>	14°11'1.98"E	<b>Data/Ora Fine</b>	31/03/2018 – 12:00

<b>Distanza dall'asse</b>	11,0 m dal binario	<b>Altezza dal p.c.</b>	0 m dal piano campagna
---------------------------	--------------------	-------------------------	------------------------

**REPORT FOTOGRAFICO E ORTOFOTO AEREA**



# MISURE DI CARATTERIZZAZIONE VIBRAZIONALE

Data	Ora	Durata passaggio [s]	Codice	Categoria	ASSE X - CH1																							
					Sintesi [dB - mm/s <sup>2</sup> ]				Leq - Frequenze [Hz] - Livelli [dB]																			
					L	L <sub>w</sub>	a	a <sub>w</sub>	1.0	1.3	1.6	2.0	2.5	3.2	4.0	5.0	6.3	8.0	10.0	12.5	16.0	20.0	25.0	31.5	40.0	50.0	63.0	80.0
30/05/2018	12:29	7.0	102091	REG	86.3	75.2	20.7	5.8	39.5	36.4	40.7	40.0	36.1	43.5	42.3	47.4	52.1	53.3	69.8	72.2	73.2	83.7	79.4	69.5	69.9	74.9	67.4	67.9
30/05/2018	12:34	3.0	102094	REG	90.7	79.7	34.4	9.7	40.3	40.9	34.7	39.0	40.0	32.9	38.1	46.5	55.1	65.2	69.9	67.6	82.4	88.4	82.5	75.6	70.7	73.2	72.4	72.4
30/05/2018	13:0	6.0	102091	REG	82.4	71.8	13.2	3.9	52.3	55.9	47.5	42.0	45.4	40.8	41.4	47.7	50.2	54.8	58.6	70.8	76.4	77.5	72.0	72.9	64.6	72.5	64.6	63.0
30/05/2018	13:23	6.0	102093	REG	88.2	76.7	25.6	6.8	56.3	55.6	47.9	52.7	46.3	44.1	54.3	58.3	50.5	63.5	71.7	73.6	84.2	82.6	84.0	74.5	74.8	75.8	71.8	71.6
30/05/2018	13:46	5.0	102193	REG	92.7	81.8	43.1	12.4	48.8	42.5	50.1	50.9	46.5	36.4	44.1	58.0	58.2	60.1	70.7	83.7	84.5	86.6	86.5	77.2	81.4	79.2	79.1	78.6
30/05/2018	14:02	4.0	102200	REG	92.3	82.0	41.0	12.5	40.9	46.2	44.1	37.9	40.4	42.3	46.1	49.5	48.8	58.6	66.6	80.5	88.1	85.9	85.6	75.5	73.1	71.6	79.0	72.6
30/05/2018	14:24	5.0	102097	REG	80.4	72.5	10.5	4.2	48.5	52.7	62.7	60.7	65.3	64.3	61.5	57.3	63.1	59.5	51.3	60.3	63.7	76.7	75.9	62.7	63.3	59.7	57.7	55.9
30/05/2018	14:29	4.0	102202	REG	91.1	78.8	35.8	8.7	49.6	45.8	46.5	47.2	52.5	52.6	51.2	50.7	52.8	53.3	58.3	66.0	67.8	88.0	84.8	82.9	76.8	74.3	73.0	76.5
30/05/2018	14:44	2.0	102099	REG	89.1	79.1	28.5	9.0	50.7	57.7	55.2	47.9	54.8	48.0	43.3	53.5	55.8	54.6	63.5	82.1	81.0	84.0	82.5	73.4	68.2	69.4	75.7	71.9
30/05/2018	16:10	4.0	102004	REG	93.6	83.6	48.0	15.1	46.0	41.8	41.4	40.1	48.3	40.7	49.6	58.1	52.4	57.5	70.5	78.5	90.6	87.9	84.3	77.0	75.4	73.2	78.0	71.3
30/05/2018	16:29	4.0	102101	REG	97.4	86.4	74.6	20.9	46.0	48.6	49.0	43.4	47.9	52.5	57.2	58.2	61.8	61.3	75.8	79.3	89.9	93.9	92.0	82.1	77.1	75.0	81.5	74.4
30/05/2018	16:10	3.0	102206	REG	93.1	83.2	45.1	14.5	44.4	36.4	22.4	43.4	44.3	40.1	48.1	54.1	51.1	56.2	65.7	77.1	90.9	85.6	83.7	75.5	75.6	71.9	77.1	71.1
30/05/2018	16:26	3.0	102109	REG	87.2	77.3	22.9	7.3	40.6	35.7	40.1	40.0	41.5	37.1	41.5	51.9	52.1	61.3	62.9	79.5	82.1	79.8	80.4	73.5	66.5	67.7	74.1	68.7
30/05/2018	16:57	4.0	102102	REG	86.3	75.2	20.5	5.8	35.2	37.1	43.5	33.6	44.1	37.6	48.0	48.3	48.7	56.7	69.5	76.2	73.1	81.0	82.0	71.3	70.1	74.3	69.8	67.5
30/05/2018	17:25	6.0	102111	REG	91.5	80.3	37.7	10.3	45.1	47.8	34.7	38.3	39.8	39.0	44.8	55.0	55.7	54.8	66.3	81.4	82.5	85.0	86.8	79.9	77.2	77.1	78.8	74.5
30/05/2018	17:42	3.0	102324	REG	97.6	85.7	75.9	19.2	43.5	43.5	38.3	35.2	43.8	42.3	56.6	61.0	55.1	59.2	71.5	80.7	86.9	90.7	95.5	80.5	78.4	80.0	80.2	74.7
30/05/2018	18:06	5.0	102320	REG	93.9	83.1	49.3	14.3	48.4	43.3	45.0	40.6	42.9	46.9	43.0	56.9	48.3	57.3	68.0	80.7	88.9	85.9	89.5	78.6	74.9	76.8	79.5	71.2
30/05/2018	18:33	4.0	102103	REG	93.4	81.5	47.0	11.9	45.8	42.1	38.8	42.7	43.0	45.3	51.9	62.3	60.8	59.1	72.3	76.5	86.0	86.2	87.8	82.2	79.1	81.6	84.7	76.2
30/05/2018	19:04	4.0	102314	REG	96.2	85.2	64.9	18.3	32.0	42.5	41.7	39.8	39.8	43.8	59.1	61.6	57.2	60.2	75.5	78.0	90.1	91.4	90.5	84.4	78.1	81.3	79.7	72.6
30/05/2018	19:24	5.0	102110	REG	86.1	74.9	20.2	5.6	42.4	35.0	41.6	35.4	34.2	48.2	45.9	45.7	50.4	52.9	72.5	72.8	74.6	81.3	80.7	65.9	63.1	78.2	70.7	68.6
30/05/2018	19:58	6.0	102326	REG	99.2	88.9	90.9	27.8	45.1	44.8	26.5	37.6	33.7	33.8	43.3	46.8	48.1	59.6	69.6	79.2	96.3	93.7	85.4	77.9	72.6	85.2	88.9	74.5
30/05/2018	20:29	5.0	102116	REG	83.3	72.8	14.6	4.4	43.0	58.1	41.3	42.9	52.8	34.7	45.5	49.0	54.6	51.9	65.4	70.5	75.5	80.6	67.9	71.3	51.1	69.8	72.6	53.0
30/05/2018	20:59	3.0	102106	REG	91.6	79.4	38.1	9.3	52.4	42.6	45.5	51.1	46.0	49.2	56.0	47.8	47.4	56.7	68.6	71.4	81.0	84.7	88.7	74.0	76.9	89.3	78.5	71.8
30/05/2018	21:25	5.0	102107	REG	89.6	79.4	30.3	9.3	55.1	48.5	51.1	60.3	47.6	35.7	42.5	58.5	57.2	63.5	80.3	78.0	75.8	83.2	83.7	74.5	70.3	82.8	72.1	72.7
30/05/2018	22:08	8.0	102218	REG	89.2	77.9	28.7	7.9	35.0	60.3	30.8	25.9	38.0	38.3	51.2	53.6	42.9	58.3	70.6	70.9	82.1	84.5	82.5	71.4	75.6	76.9	76.7	75.0
30/05/2018	22:36	5.0	102110	REG	85.7	80.9	19.2	11.1	38.0	46.7	57.2	58.9	80.6	61.6	64.6	56.1	64.1	63.6	54.3	55.0	54.6	80.4	77.8	66.1	78.2	59.7	51.7	56.1
31/05/2018	5:31	3.0	102325	REG	99.7	88.1	96.8	25.3	38.5	47.2	51.3	45.1	54.6	54.0	51.2	65.3	58.4	56.9	72.3	78.7	91.8	95.9	92.4	86.8	84.7	82.5	89.9	83.2
31/05/2018	6:25	3.0	102184	REG	88.4	78.5	36.3	8.4	40.3	62.7	45.8	45.3	50.5	39.5	30.1	44.2	51.8	54.4	57.7	80.9	82.0	83.5	79.6	72.8	66.9	71.0	76.7	68.1
31/05/2018	7:07	4.0	102217	REG	86.7	76.0	21.5	6.3	42.5	38.2	34.4	37.7	41.0	41.9	53.5	54.4	51.0	54.8	64.1	73.6	82.3	79.2	79.1	69.6	76.4	71.0	75.4	62.2
31/05/2018	7:19	17.0	102196	REG	94.2	82.4	51.4	13.1	48.8	56.4	46.9	32.2	47.6	43.4	55.2	49.2	62.0	66.8	64.1	64.9	73.9	92.0	87.7	74.5	85.6	69.6	62.8	73.7
31/05/2018	7:26	5.0	102061	TCS	98.1	84.9	80.1	17.5	59.9	42.5	21.1	45.4	46.3	47.1	59.9	59.0	59.1	61.4	72.7	78.8	86.4	90.5	91.8	84.9	93.4	87.6	80.9	77.1
31/05/2018	7:39	8.0	102327	REG	84.0	70.5	15.9	3.4	30.7	44.4	38.9	37.3	34.6	37.3	34.5	49.4	40.0	57.5	58.4	63.1	70.3	74.9	80.7	73.0	70.7	65.0	69.6	77.8
31/05/2018	7:43	3.0	102188	REG	87.7	74.8	24.3	5.5	40.2	40.5	51.6	40.2	52.9	37.1	45.9	49.1	47.0	54.7	63.5	64.6	71.7	81.9	83.3	75.7	80.2	67.7	75.1	72.7
31/05/2018	8:08	5.0	102180	REG	88.0	78.6	25.1	8.5	48.0	51.8	38.0	37.5	48.0	39.0	34.7	56.0	53.1	57.5	66.6	83.1	80.5	80.5	79.5	73.0	69.8	73.7	75.2	72.6
31/05/2018	8:25	6.0	102216	REG	98.4	86.8	83.0	21.9	39.8	45.1	27.4	29.0	48.8	35.2	59.9	64.5	54.3	59.3	71.0	77.9	85.7	95.9	92.9	78.6	82.8	72.0	84.3	77.3
31/05/2018	8:29	5.0	102216	REG	97.4	84.3	73.8	16.5	39.9	52.2	44.3	36.4	42.9	40.1	30.7	42.6	51.8	59.3	54.7	69.2	77.1	87.8	95.6	89.7	80.6	72.5	72.3	78.3
31/05/2018	8:57	6.0	102043	REG	97.6	85.3	75.9	18.3	36.7	47.5	34.8	44.4	41.9	44.6	51.6	65.2	61.0	61.5	72.4	78.6	89.1	91.2	91.6	85.4	86.8	88.0	87.1	80.6
31/05/2018	9:00	5.0	102208	REG	89.5	77.8	29.9	7.7	20.8	34.5	35.7	55.7	49.8	38.5	57.5	63.4	56.1	66.8	70.3	62.9	74.7	85.0	85.8	75.2	80.1	60.8	59.7	68.8
31/05/2018	9:32	3.0	102329	REG	96.3	85.3	65.7	18.5	32.1	42.6	41.8	39.9	39.9	43.9	59.2	61.7	57.3	60.3	75.6	78.1	90.2	91.5	90.6	84.5	78.2	81.4	79.8	72.7
31/05/2018	9:44	3.0	102882	REG	93.3	83.4	46.2	14.8	44.6	36.6	22.6	43.6	44.5	40.3	48.3	54.3	51.3	56.4	65.9	77.3	91.1	85.8	83.9	75.7	75.8	72.1	77.3	71.3
31/05/2018	10:24	3.0	102910	REG	83.2	72.7	14.5	4.3	42.9	58.0	41.2	42.8	52.7	34.6	45.4	48.9	54.5	51.8	65.3	70.4	75.4	80.5	67.8	71.2	51.0	69.7	72.5	52.9
31/05/2018	10:30	1.0	102223	REG	91.2	80.0	36.4	10.0	44.8	47.5	34.4	38.0	39.5	38.7	44.5	54.7	55.4	54.5	66.0	81.1	82.2	84.7	86.5	79.6	76.9	76.8	78.5	74.2
31/05/2018	10:34	8.0	102220	REG	87.0	77.1	22.4	7.2	40.4	35.5	39.9	39.8	41.3	36.9	41.3	51.7	51.9	61.1	62.7	79.3	81.9	79.6	80.2	73.3	66.3	67.5	73.9	68.5

Data	Ora	Durata passaggio [s]	Codice	Categoria	ASSE Y - CH2																									
					Sintesi [dB - mm/s <sup>2</sup> ]				Leq - Frequenze [Hz] - Livelli [dB]																					
					L <sub>w</sub>	L <sub>w</sub>	a <sub>w</sub>	a <sub>w</sub>	1.0	1.3	1.6	2.0	2.5	3.2	4.0	5.0	6.3	8.0	10.0	12.5	16.0	20.0	25.0	31.5	40.0	50.0	63.0	80.0		
30/05/2018	12:29	7.0	102091	REG	88.1	75.6	25.4	6.1	37.7	36.5	36.5	36.8	39.1	22.5	38.4	38.4	46.0	50.8	66.5	67.4	71.9	83.8	83.2	72.3	75.9	79.0	71.8	72.5		
30/05/2018	12:34	3.0	102094	REG	88.0	75.4	25.1	5.9	42.2	42.2	29.5	42.3	43.8	37.4	35.8	36.5	51.6	58.0	58.6	65.7	74.4	82.8	83.7	76.7	77.3	72.0	74.7	74.1		
30/05/2018	12:40	6.0	102097	REG	86.6	76.3	21.3	6.5	40.4	50.7	44.1	46.0	41.3	36.2	40.7	47.0	44.0	54.0	57.1	70.7	82.5	82.8	71.8	71.6	69.2	73.8	68.3	66.7		
30/05/2018	12:23	6.0	102093	REG	89.8	77.0	30.9	7.1	50.4	45.3	46.2	45.6	49.9	41.2	37.2	45.7	46.7	62.4	63.6	74.4	72.1	84.3	84.8	75.5	77.2	80.2	79.6	77.0		
30/05/2018	13:46	5.0	102193	REG	92.5	80.0	42.3	10.0	45.9	45.9	35.3	43.8	50.0	44.4	44.8	47.5	46.5	52.6	63.5	75.5	82.8	85.8	87.6	81.1	79.5	80.4	81.8	81.0		
30/05/2018	14:22	4.0	102200	REG	88.6	76.5	27.0	6.7	43.0	49.1	37.2	34.8	43.5	34.8	40.4	44.2	45.3	50.0	61.5	73.6	78.2	82.5	84.4	78.4	71.0	73.7	76.3	75.6		
30/05/2018	14:24	5.0	102097	REG	79.0	70.8	8.9	3.5	50.0	53.7	58.2	58.2	64.1	62.3	58.8	56.6	61.8	58.2	53.1	58.8	65.0	74.6	75.0	65.1	59.6	58.1	54.6	57.2		
30/05/2018	14:28	4.0	102202	REG	90.9	78.1	35.1	8.0	40.7	45.5	45.8	48.3	48.9	50.0	51.6	50.9	46.4	52.2	55.7	61.0	66.1	86.3	86.0	83.2	77.8	77.2	75.6	76.4		
30/05/2018	14:44	2.0	102099	REG	88.9	77.4	27.7	7.5	37.4	37.2	45.0	38.9	45.0	40.9	40.9	46.4	43.8	53.8	59.2	70.6	81.5	85.2	80.9	76.5	70.5	72.3	77.7	74.6		
30/05/2018	16:10	4.0	102004	REG	92.6	82.4	42.7	13.2	38.7	46.8	42.5	41.6	36.2	43.6	39.6	45.6	44.4	54.9	68.2	75.5	90.1	81.4	85.9	79.2	73.9	75.6	77.8	74.2		
30/05/2018	16:29	4.0	102101	REG	97.0	85.6	70.4	18.9	41.8	48.7	49.6	38.4	45.9	49.1	53.5	56.0	52.4	44.1	67.8	76.0	90.2	91.7	92.5	82.5	76.8	79.5	83.4	78.9		
30/05/2018	16:10	3.0	102206	REG	93.4	83.5	46.7	15.0	44.4	37.2	41.5	37.7	42.5	38.0	40.7	46.5	51.4	53.2	67.0	76.6	91.5	82.5	85.4	78.8	71.1	74.6	77.4	73.6		
30/05/2018	16:26	3.0	102109	REG	87.3	76.5	23.2	6.7	35.3	44.0	37.7	39.9	44.0	22.5	41.0	41.4	41.8	54.8	59.8	71.3	83.5	79.8	79.0	75.6	70.6	71.5	76.6	72.0		
30/05/2018	16:57	4.0	102102	REG	88.7	75.6	27.1	6.0	35.3	35.8	31.0	40.5	38.2	37.2	44.9	42.8	51.6	53.6	63.2	70.5	73.3	79.3	86.2	74.5	71.9	80.6	72.9	73.2		
30/05/2018	17:25	6.0	102111	REG	91.0	78.8	35.4	8.7	32.1	36.5	38.4	34.8	36.2	32.1	41.4	41.7	42.3	50.0	57.8	71.1	83.0	84.6	86.0	79.7	76.3	77.4	80.6	76.7		
30/05/2018	17:42	3.0	102324	REG	95.7	82.9	60.7	13.9	43.4	40.7	40.5	41.2	40.8	36.5	44.1	47.7	47.9	52.4	65.0	79.8	83.0	81.2	94.0	82.4	76.2	84.6	82.4	77.7		
30/05/2018	18:06	5.0	102310	REG	92.3	80.1	41.4	10.2	42.4	46.0	42.4	39.2	41.9	29.5	42.5	43.4	48.2	51.8	64.8	77.3	83.7	80.9	89.7	78.4	74.8	81.7	78.8	76.1		
30/05/2018	18:33	4.0	102103	REG	94.9	83.0	55.6	14.1	39.6	40.4	38.2	27.3	40.2	32.1	49.1	51.5	47.0	56.7	65.6	74.1	88.1	87.5	90.5	81.1	78.0	83.1	84.0	79.0		
30/05/2018	19:04	4.0	102314	REG	96.0	84.3	62.9	16.3	41.6	36.5	22.5	35.3	42.1	38.0	37.2	43.6	47.6	47.7	67.1	77.6	89.5	88.5	91.6	82.5	78.4	84.9	84.1	75.8		
30/05/2018	19:24	5.0	102110	REG	91.9	79.4	39.5	9.3	41.6	24.2	24.7	34.5	39.7	14.5	36.0	37.1	45.2	49.4	67.7	70.7	81.2	85.9	87.7	67.4	72.3	85.4	72.9	76.4		
30/05/2018	19:58	5.0	102326	REG	95.2	82.1	57.3	12.7	41.6	42.5	34.3	42.0	50.5	52.0	55.2	45.3	43.2	51.4	63.0	80.0	88.2	83.7	85.1	78.2	71.3	89.9	89.4	75.9		
30/05/2018	20:29	5.0	102116	REG	86.8	76.6	21.9	6.8	40.1	50.1	49.2	49.5	37.2	38.3	43.7	46.8	47.0	56.3	61.7	70.3	84.0	81.0	67.4	71.8	65.3	72.0	76.7	59.0		
30/05/2018	20:59	3.0	102106	REG	95.0	83.3	56.5	14.7	34.3	58.3	52.3	43.2	39.2	41.0	43.0	42.7	55.4	67.3	84.5	86.3	88.0	89.1	75.5	74.7	87.4	85.6	77.7			
30/05/2018	21:25	5.0	102107	REG	91.2	79.5	36.1	9.4	42.8	48.0	30.6	38.8	43.3	38.1	48.0	48.6	39.5	55.3	73.0	70.5	79.0	88.7	80.9	75.9	77.2	81.1	73.0	79.5		
30/05/2018	22:08	8.0	102218	REG	87.6	74.0	23.9	5.0	33.6	55.0	39.4	39.3	38.6	35.2	49.8	50.4	41.4	46.4	65.3	71.4	74.6	80.4	80.4	72.1	74.7	79.1	74.6	81.7		
30/05/2018	22:36	5.0	102110	REG	84.4	73.5	16.6	4.7	54.1	40.8	55.3	46.8	50.3	64.2	53.8	53.5	55.5	65.8	61.4	51.5	54.6	81.0	80.7	72.0	66.8	50.5	48.7	61.0		
31/05/2018	5:31	3.0	102325	REG	97.8	84.2	78.0	16.4	36.6	39.1	45.3	55.1	50.0	51.3	76.8	57.2	58.0	61.3	68.6	72.8	82.5	91.2	90.5	85.8	83.9	89.7	92.0	83.7		
31/05/2018	6:25	3.0	102184	REG	90.8	80.6	34.7	10.7	39.4	41.9	40.6	39.6	60.0	39.3	42.5	37.1	33.8	56.5	56.5	64.1	88.3	83.4	81.1	79.3	67.2	72.0	76.9	73.0		
31/05/2018	7:07	4.0	102217	REG	83.8	71.3	15.6	3.7	40.6	26.7	44.2	36.3	38.7	42.5	41.9	40.8	38.3	42.5	41.4	60.4	57.9	68.2	80.8	92.3	82.9	75.7	82.1	70.6	62.3	77.5
31/05/2018	7:18	17.0	102186	REG	93.6	82.2	47.9	12.9	41.8	35.3	38.7	42.5	41.9	40.8	38.3	42.5	41.4	60.4	57.9	68.2	80.8	92.3	82.9	75.7	82.1	70.6	62.3	77.5		
31/05/2018	7:26	5.0	102061	TCS	97.1	84.1	71.5	16.1	42.9	31.7	32.3	36.2	46.4	46.2	54.8	44.2	58.6	69.1	78.4	75.1	82.2	87.2	94.3	83.6	87.4	87.8	81.3	80.1		
31/05/2018	7:39	8.0	102227	REG	85.3	70.2	18.4	3.2	37.0	44.4	37.7	37.2	49.2	11.6	34.8	31.9	27.1	38.4	44.9	50.6	70.5	74.3	79.6	74.6	73.1	68.0	71.5	81.4		
31/05/2018	7:43	3.0	102188	REG	91.7	78.5	38.3	8.4	36.9	28.9	29.9	45.7	29.8	37.2	41.1	40.0	53.9	54.3	57.1	53.7	68.9	84.8	88.6	81.2	82.1	72.8	78.2	77.3		
31/05/2018	8:08	5.0	102180	REG	92.7	81.5	43.2	11.9	22.8	38.9	26.6	29.2	36.9	25.7	37.7	34.7	33.6	51.2	61.9	72.0	87.3	85.4	88.8	80.3	74.0	71.9	75.4	73.5		
31/05/2018	8:25	6.0	102216	REG	93.0	78.8	44.4	8.7	36.2	21.4	36.7	39.0	35.5	29.2	33.8	41.3	54.1	47.7	54.3	71.2	76.8	79.7	90.0	80.5	78.2	77.2	86.4	81.8		
31/05/2018	8:29	5.0	102216	REG	95.2	82.0	57.7	12.6	56.2	47.2	26.6	30.9	52.3	30.7	36.0	38.5	57.7	59.4	58.1	60.6	67.6	83.4	94.1	83.6	77.2	74.5	70.6	83.2		
31/05/2018	8:57	5.0	102043	REG	101.8	90.1	122.9	31.8	42.9	36.5	31.8	29.9	38.4	33.7	52.0	52.5	44.8	58.0	70.7	78.9	91.9	98.3	96.0	91.7	83.5	87.1	84.8	82.9		
31/05/2018	9:00	6.0	102208	REG	89.6	76.8	30.2	6.9	34.8	37.3	20.6	33.8	46.6	30.3	25.4	30.1	45.2	49.0	63.0	61.6	72.5	81.9	87.7	72.5	80.3	58.3	61.1	73.6		
31/05/2018	9:32	3.0	102329	REG	84.1	74.4	16.1	5.3	51.0	46.1	58.0	61.7	58.5	57.5	61.2	58.2	70.8	62.0	57.8	56.5	69.7	80.8	78.6	73.8	64.9	59.2	63.9	68.2		
31/05/2018	9:44	3.0	102882	REG	88.2	78.2	25.6	8.1	30.0	46.8	42.4	49.8	35.1	36.2	42.7	50.4	45.2	51.5	66.9	72.7	84.5	84.5	72.2	75.3	64.8	66.0	67.5	67.1		
31/05/2018	10:24	3.0	102916	REG	90.2	76.4	32.2	6.6	53.5	34.2	48.9	42.1	46.5	32.5	30.0	40.9	51.3	53.8	66.5	76.3	74.9	80.1	85.2	71.6	71.9	78.8	83.7	82.7		
31/05/2018	10:30	1.0	102223	REG	96.5	85.2	66.6	18.2	43.6	50.4	41.4	40.2	43.8	52.0	56.5	61.8	51.6	53.3	63.2	76.1	91.7	90.4	88.7	79.5	76.5	85.1	85.9	83.6		
31/05/2018	10:34	8.0	102220	REG	96.0	84.5	62.9	16.8	45.9	52.3	45.9	38.6	45.6	50.2	44.0	49.4	44.9	52.9	52.1	80.0	90.9	88.9	87.8	78.7	79.4	89.2	77.5	82.9		



Data	Ora	Durata passaggio [s]	Codice	Categoria	ASSE Z - CH3																								
					Sintesi [dB - mm/s <sup>2</sup> ]				Leq - Frequenze [Hz] - Livelli [dB]																				
					L	L <sub>w</sub>	a	a <sub>w</sub>	1.0	1.3	1.6	2.0	2.5	3.2	4.0	5.0	6.3	8.0	10.0	12.5	16.0	20.0	25.0	31.5	40.0	50.0	63.0	80.0	
30/05/2018	12:29	7.0	102091	REG	77.7	62.8	7.6	1.4	31.7	42.9	22.1	30.6	41.3	26.9	39.8	44.0	41.2	50.0	60.6	64.1	60.2	61.5	62.4	59.5	67.1	74.6	67.3	70.0	
30/05/2018	12:34	3.0	102094	REG	80.3	64.4	10.3	1.7	40.9	39.5	42.4	40.4	38.5	35.4	37.6	43.5	49.0	57.4	59.4	55.4	60.4	68.1	68.0	65.0	76.4	69.5	72.7	73.0	
30/05/2018	12:40	6.0	102091	REG	73.7	64.3	4.9	1.6	47.8	47.5	44.6	41.0	44.4	39.4	42.2	45.6	43.3	48.2	51.1	65.1	70.6	64.0	50.1	55.4	59.2	62.3	59.7	63.1	
30/05/2018	12:23	6.0	102093	REG	81.2	67.6	11.5	2.4	53.9	46.6	46.0	44.5	42.4	42.6	48.9	38.8	45.5	55.2	59.5	71.6	63.8	64.0	66.1	67.9	69.9	76.8	73.3	73.3	
30/05/2018	13:46	5.0	102193	REG	85.8	71.5	19.5	3.7	39.8	36.1	40.8	48.7	42.2	42.7	40.3	47.7	51.2	53.7	62.2	75.8	71.0	67.3	70.9	68.9	75.8	75.4	80.4	80.8	
30/05/2018	14:02	4.0	102200	REG	82.3	68.7	13.1	2.7	40.4	40.5	45.3	43.2	42.0	37.8	40.8	45.8	46.9	49.9	64.9	72.4	69.9	61.0	62.6	67.2	66.3	70.2	80.0	72.4	
30/05/2018	14:24	5.0	102097	REG	71.2	69.8	3.6	3.1	48.8	51.6	61.2	59.4	64.5	62.9	59.9	57.5	63.9	60.8	54.0	46.8	48.2	53.3	51.9	41.0	43.0	40.9	40.4	42.0	
30/05/2018	14:28	4.0	102202	REG	82.2	65.7	12.9	1.9	47.1	40.8	46.2	49.6	52.0	52.9	52.4	53.9	49.0	53.3	52.2	56.3	56.4	68.6	68.2	70.8	74.2	72.8	72.6	78.8	
30/05/2018	14:44	2.0	102099	REG	80.3	69.4	10.4	2.9	49.4	49.7	51.2	45.5	49.2	44.7	41.5	44.0	49.8	52.2	58.3	74.6	70.2	62.8	61.9	59.4	61.7	67.3	75.6	72.8	
30/05/2018	16:10	4.0	102004	REG	81.2	69.5	11.4	3.0	37.8	44.0	41.9	40.4	39.5	36.4	41.8	55.3	51.5	48.9	64.5	70.9	74.3	70.4	66.3	63.1	68.2	68.7	76.3	71.5	
30/05/2018	16:29	4.0	102101	REG	85.4	72.2	18.6	4.1	38.8	39.4	50.8	42.1	44.2	50.8	52.7	55.8	53.8	56.8	65.0	68.8	78.4	71.8	73.1	70.3	72.1	73.9	81.1	76.9	
30/05/2018	16:10	3.0	102206	REG	81.0	68.7	11.3	2.7	34.9	22.1	38.3	32.6	35.8	38.0	34.9	53.8	51.1	44.2	63.2	69.1	73.8	70.6	64.9	64.2	69.1	68.8	75.7	73.4	
30/05/2018	16:26	3.0	102109	REG	79.4	68.1	9.3	2.5	34.4	40.8	22.1	37.8	35.8	39.0	40.5	42.4	45.0	54.0	52.6	70.7	74.0	64.4	62.5	61.9	61.5	63.9	74.8	69.8	
30/05/2018	16:57	4.0	102102	REG	78.1	62.8	8.1	1.4	37.8	36.1	33.9	38.3	47.0	41.6	45.7	48.8	45.4	50.6	58.6	62.2	62.4	60.5	65.4	61.4	65.3	75.3	69.8	68.8	
30/05/2018	17:25	6.0	102111	REG	83.9	70.2	15.7	3.2	39.8	41.5	35.8	41.3	38.0	40.9	45.0	45.3	49.1	50.9	56.6	73.9	73.0	66.5	66.5	70.3	68.4	71.4	73.9	80.1	75.9
30/05/2018	17:42	3.0	102324	REG	87.2	71.1	22.9	3.6	29.1	45.6	43.5	38.3	35.8	42.1	53.8	56.7	43.8	48.6	63.4	73.2	72.3	66.4	70.2	69.0	73.4	80.7	84.2	77.5	
30/05/2018	18:06	5.0	102101	REG	83.3	68.2	14.7	2.6	43.3	36.8	40.3	34.9	39.5	44.8	45.1	53.4	45.8	48.4	61.3	68.7	72.4	66.1	66.6	65.3	67.8	76.7	80.1	73.4	
30/05/2018	18:33	4.0	102103	REG	86.1	71.6	20.3	3.8	26.9	36.1	30.6	35.8	35.8	37.0	45.8	57.0	54.9	51.6	63.6	67.2	78.0	69.5	68.9	68.3	75.0	77.7	81.7	78.9	
30/05/2018	19:04	4.0	102124	REG	85.6	70.9	19.0	3.5	33.3	42.7	35.8	40.6	41.5	38.3	54.5	56.4	47.5	50.5	63.6	71.8	75.0	68.4	68.9	71.2	70.1	78.3	82.3	75.3	
30/05/2018	19:24	5.0	102110	REG	78.0	67.1	8.0	2.3	32.3	26.8	15.9	32.0	49.3	28.5	38.4	40.5	39.1	49.5	59.5	72.7	65.1	58.4	63.0	55.3	61.9	72.6	70.3	68.4	
30/05/2018	19:58	6.0	102326	REG	89.0	71.6	28.1	3.8	40.2	34.5	48.3	35.5	41.5	38.7	39.2	42.2	50.5	50.2	66.4	73.6	68.1	63.9	71.3	70.2	70.9	77.9	88.0	74.0	
30/05/2018	20:29	5.0	102116	REG	73.4	63.8	4.7	1.6	47.5	43.1	38.5	41.9	53.6	36.3	47.2	43.2	41.9	44.3	53.3	56.0	70.9	65.7	41.5	51.7	46.9	59.2	65.6	51.8	
30/05/2018	20:59	3.0	102106	REG	85.8	69.1	19.5	2.9	58.9	49.2	45.8	41.0	43.9	41.1	52.1	42.1	43.2	49.8	66.4	67.2	69.2	64.6	62.4	73.1	75.1	84.5	72.4	72.4	
30/05/2018	21:25	5.0	102107	REG	82.8	71.3	13.8	3.7	46.4	34.7	40.1	53.3	38.8	38.3	34.8	45.3	53.7	55.1	69.8	73.7	66.1	74.7	73.4	66.0	66.7	77.7	72.3	72.0	
30/05/2018	22:08	8.0	102108	REG	84.1	67.3	16.0	2.3	33.7	44.3	47.6	43.4	40.5	40.3	41.4	46.6	47.7	43.9	67.5	65.2	62.2	57.3	58.4	65.1	71.5	77.6	81.8	72.1	
30/05/2018	22:36	5.0	102110	REG	78.5	77.4	8.4	7.4	54.5	52.6	70.1	67.9	74.6	61.7	58.3	56.7	66.6	72.1	57.4	43.4	55.2	55.7	42.0	54.3	50.9	34.5	40.6	40.6	
31/05/2018	5:31	3.0	102325	REG	93.8	75.3	48.9	6.5	35.9	51.1	47.1	51.4	52.1	47.9	55.4	55.9	45.6	50.1	62.2	74.1	79.5	73.8	77.0	75.8	83.0	79.5	91.6	86.3	
31/05/2018	6:25	3.0	102184	REG	76.8	63.4	6.9	1.5	39.4	36.0	46.4	39.8	49.0	43.1	32.5	46.7	46.2	46.3	58.7	66.3	64.1	63.4	59.5	59.8	62.6	66.5	74.3	65.0	
31/05/2018	7:07	4.0	102217	REG	77.3	63.9	7.3	1.6	46.5	23.3	33.8	46.6	49.1	35.9	40.0	47.8	43.5	47.7	52.4	66.2	67.9	53.6	55.2	53.4	69.6	68.7	73.8	60.5	
31/05/2018	7:19	17.0	102196	REG	84.8	68.8	17.3	2.8	35.3	34.0	49.9	32.9	52.0	51.0	42.2	47.5	46.5	61.5	58.2	51.7	60.9	70.1	64.0	66.5	83.6	73.3	62.7	74.2	
31/05/2018	7:26	5.0	102061	TCS	93.0	76.3	44.4	6.5	42.0	5.2	36.2	30.6	37.2	41.4	37.4	47.8	52.4	55.5	73.7	66.8	73.2	74.1	72.8	76.1	87.8	90.4	79.6	76.8	
31/05/2018	7:39	8.0	102327	REG	77.5	59.1	7.5	0.9	38.7	36.3	22.2	39.4	25.7	32.2	36.6	44.9	37.9	45.4	43.1	45.7	58.8	58.9	58.4	59.2	70.7	67.5	69.4	74.3	
31/05/2018	7:43	3.0	102188	REG	80.0	64.2	10.0	1.6	26.5	32.7	36.0	34.7	51.4	45.0	41.9	47.2	42.7	50.9	51.1	50.3	61.0	65.5	69.5	66.1	76.9	70.5	71.4	68.5	
31/05/2018	8:08	5.0	102180	REG	81.6	67.0	12.0	2.2	35.5	33.7	42.5	47.2	43.0	39.5	43.0	44.8	45.0	48.1	60.5	68.4	69.8	68.1	68.4	65.8	65.6	71.7	78.9	70.9	
31/05/2018	8:25	6.0	102181	REG	88.7	71.0	27.4	3.6	32.9	50.2	47.0	40.4	34.5	47.0	54.4	52.1	38.5	46.9	58.5	68.3	73.5	68.0	67.0	68.2	78.3	80.1	86.9	76.1	
31/05/2018	8:25	5.0	102181	REG	82.8	66.0	13.8	2.0	33.4	38.2	44.0	33.8	42.1	47.4	47.7	47.9	42.7	53.3	50.5	50.7	62.1	66.5	71.9	71.8	72.1	80.0	72.7	72.6	
31/05/2018	8:57	5.0	102043	REG	90.0	74.7	31.7	5.5	23.6	34.3	31.4	30.0	38.1	36.5	50.3	58.9	54.5	49.1	65.1	69.9	79.5	76.3	71.9	77.4	81.6	84.7	83.0	81.8	
31/05/2018	9:00	6.0	102308	REG	78.3	65.5	8.2	1.9	36.9	44.2	44.4	41.4	41.2	35.6	57.6	60.3	48.2	61.2	57.1	53.7	61.9	63.8	64.5	62.7	75.8	68.5	66.3	67.8	
31/05/2018	9:32	3.0	102329	REG	86.7	69.7	21.7	3.1	34.6	52.1	39.1	45.9	38.4	41.1	42.3	46.0	51.7	47.0	63.3	68.2	73.4	64.1	66.3	69.9	71.0	75.0	85.0	78.0	
31/05/2018	9:44	3.0	102882	REG	70.4	62.0	3.3	1.3	50.4	36.5	44.0	44.4	52.1	35.8	46.4	50.8	45.6	48.2	55.9	60.3	66.8	62.6	47.7	51.5	54.1	56.0	58.7	58.7	
31/05/2018	10:24	3.0	102910	REG	78.7	63.0	8.6	1.4	27.6	36.5	26.3	42.5	27.0	38.4	41.5	49.0	46.6	49.1	56.2	62.4	65.5	64.2	65.4	59.5	66.7	71.3	68.2	75.6	
31/05/2018	10:30	1.0	102223	REG	81.5	69.8	11.8	3.1	38.1	44.3	42.2	40.7	39.8	36.7	42.1	55.6	51.8	49.2	64.8	71.2	74.6	70.7	66.6	63.4	68.5	69.0	76.6	71.8	
31/05/2018	10:34	8.0	102220	REG	89.4	72.0	29.4	4.0	40.6	34.9	48.7	35.9	41.9	39.1	39.6	42.6	50.9	50.6	66.8	74.0	68.5	64.3	71.7	70.6	71.0	78.3	88.4	74.4	

<b>Punto di Misura:</b>	VIB_3	<b>Comune:</b>	San Giovanni Teatino
-------------------------	-------	----------------	----------------------

<b>Provincia:</b>	Chieti	<b>Regione:</b>	Abruzzo
-------------------	--------	-----------------	---------

<b>Coordinate Nord</b>	42°25'14.61"N	<b>Data/Ora Inizio</b>	30/03/2018 – 12:30
<b>Coordinate Est</b>	14°11'2.11"E	<b>Data/Ora Fine</b>	31/03/2018 – 12:30

<b>Distanza dall'asse</b>	15,0 m dal binario	<b>Altezza dal p.c.</b>	0 m dal piano campagna
---------------------------	--------------------	-------------------------	------------------------

## REPORT FOTOGRAFICO E ORTOFOTO AEREA



# MISURE DI CARATTERIZZAZIONE VIBRAZIONALE

Data	Ora	Durata passaggio [s]	Codice	Categoria	ASSE X - CH1																							
					Sintesi [dB - mm/s <sup>2</sup> ]				Leq - Frequenze [Hz] - Livelli [dB]																			
					L	L <sub>w</sub>	a	a <sub>w</sub>	1.0	1.3	1.6	2.0	2.5	3.2	4.0	5.0	6.3	8.0	10.0	12.5	16.0	20.0	25.0	31.5	40.0	50.0	63.0	80.0
30/05/2018	12:34	3.0	102914	REG	88.0	68.6	25.1	2.7	40.3	42.7	33.9	35.4	35.8	38.7	38.8	41.4	50.8	60.8	58.4	59.9	64.8	69.4	67.7	70.0	76.6	75.2	82.2	85.5
30/05/2018	13:10	6.0	103191	REG	85.4	67.9	18.5	2.5	47.4	45.9	32.6	43.3	45.5	33.9	43.8	46.5	47.0	52.1	63.3	67.8	66.9	65.9	63.7	72.9	75.7	83.0	78.0	
30/05/2018	13:23	6.0	102993	REG	89.5	70.8	29.9	3.5	43.2	43.9	40.0	38.0	42.0	37.3	40.1	40.9	41.9	61.1	63.2	68.0	65.6	69.9	69.4	67.9	74.6	84.6	82.4	85.6
30/05/2018	13:46	6.0	103183	REG	91.3	73.0	36.6	4.5	44.6	46.1	35.8	39.4	35.8	38.3	42.4	43.9	46.7	55.3	62.2	72.4	75.0	70.4	69.9	69.8	79.1	81.0	87.1	87.3
30/05/2018	14:02	4.0	103200	REG	86.2	70.4	20.3	3.3	50.4	36.1	43.6	43.0	40.5	37.3	45.3	44.1	42.6	53.2	64.7	70.6	74.1	67.7	63.8	66.9	67.8	81.5	80.9	79.5
30/05/2018	14:24	5.0	102997	REG	82.7	65.7	13.6	1.9	46.6	39.7	37.0	32.6	42.7	34.4	41.0	42.5	43.5	46.1	62.1	63.2	68.1	63.3	62.7	63.0	65.9	76.8	79.6	74.3
30/05/2018	14:28	4.0	103202	REG	88.2	69.7	25.6	3.1	58.6	60.6	55.2	55.7	45.0	37.6	41.2	41.5	46.8	50.6	54.3	61.6	59.9	69.1	69.3	72.6	77.1	76.0	80.3	86.2
30/05/2018	14:44	2.0	102999	REG	89.3	71.7	29.1	3.8	39.7	41.5	41.3	36.4	41.3	42.1	45.3	46.3	46.0	52.4	59.6	73.1	73.1	69.6	70.1	69.5	70.5	78.0	87.2	82.5
30/05/2018	15:10	4.0	103204	REG	88.1	75.0	25.3	5.6	46.0	43.2	33.9	43.1	44.8	39.5	42.6	45.0	47.2	55.0	67.2	78.1	79.5	72.5	69.6	70.1	71.8	77.8	83.3	81.9
30/05/2018	15:29	4.0	103101	REG	92.0	77.4	39.7	7.4	34.9	36.1	40.3	36.4	42.4	33.9	44.6	51.4	45.5	52.8	65.2	72.1	84.6	76.5	72.4	70.8	75.1	80.6	88.7	84.8
30/05/2018	16:10	3.0	103206	REG	86.7	75.0	21.5	5.6	35.4	41.6	34.9	34.9	43.1	30.6	39.4	44.0	47.6	53.9	62.0	75.8	82.0	70.7	68.8	68.4	69.3	73.9	80.0	80.2
30/05/2018	16:26	3.0	102109	REG	86.2	69.4	20.5	3.0	33.3	46.1	41.8	39.5	41.1	38.7	44.1	41.2	38.7	51.5	61.3	69.8	72.0	69.5	67.6	68.1	70.9	75.3	83.8	79.4
30/05/2018	16:57	4.0	102102	REG	83.2	67.9	14.5	2.5	40.1	43.7	39.4	32.6	45.0	36.1	40.9	43.3	49.7	53.9	63.2	70.9	67.5	66.6	64.0	64.6	69.2	76.2	78.7	77.4
30/05/2018	17:25	6.0	102111	REG	88.4	70.8	26.4	3.5	32.6	42.0	36.8	34.4	40.0	38.8	41.0	43.1	43.0	52.2	57.9	68.0	75.3	69.2	67.0	69.3	74.6	77.4	85.4	83.1
30/05/2018	17:42	3.0	103224	REG	91.1	74.7	35.9	5.4	41.3	45.8	40.9	37.3	39.8	36.8	44.3	45.0	41.5	53.5	62.7	77.3	77.2	68.7	74.7	70.4	73.9	81.6	87.9	85.4
30/05/2018	18:06	5.0	103210	REG	86.5	70.7	21.1	3.4	40.4	41.0	38.8	38.7	44.2	29.1	42.6	45.5	47.2	53.5	62.4	73.8	72.8	65.8	67.3	65.8	72.1	78.7	82.0	81.4
30/05/2018	18:33	4.0	102103	REG	91.7	76.5	38.5	6.7	38.5	36.1	43.4	41.3	35.8	43.7	45.6	45.8	48.9	54.4	66.5	72.9	83.4	69.4	68.2	70.1	73.5	81.2	89.2	83.5
30/05/2018	19:04	4.0	103214	REG	91.0	76.5	35.7	6.7	40.3	39.7	41.8	35.4	37.0	40.1	39.0	44.8	44.2	51.6	67.7	75.7	82.8	72.6	70.4	69.8	75.0	83.2	87.0	84.1
30/05/2018	19:24	4.0	102110	REG	84.4	66.7	16.7	2.2	39.0	36.1	35.8	41.3	38.0	37.8	32.6	41.4	49.8	49.8	57.7	67.4	67.1	62.2	64.7	64.2	71.1	77.8	80.9	78.0
30/05/2018	19:58	5.0	103208	REG	86.2	72.2	20.5	4.1	38.8	41.6	40.6	38.7	39.5	29.1	41.2	41.0	42.4	50.0	58.1	75.0	77.4	62.2	68.6	65.0	71.2	73.8	83.3	78.4
30/05/2018	20:29	5.0	102116	REG	89.1	74.7	28.5	5.4	39.0	36.1	29.1	35.4	29.1	37.3	50.5	49.0	44.8	55.7	63.9	75.6	80.5	70.8	67.8	70.1	71.5	78.0	86.5	80.4
30/05/2018	20:59	3.0	102106	REG	90.6	73.8	33.9	4.9	39.0	36.1	32.6	34.9	39.8	41.5	41.5	49.8	42.5	53.6	66.9	76.4	72.1	68.9	72.3	71.9	76.2	84.7	87.4	82.0
30/05/2018	21:55	5.0	102107	REG	86.1	67.3	20.2	2.3	39.8	39.2	40.9	40.8	43.5	44.2	40.6	39.0	48.6	51.6	59.2	65.6	65.0	62.8	64.2	64.2	70.5	79.7	83.0	79.4
30/05/2018	22:08	8.0	103218	REG	90.5	73.7	33.7	4.9	41.5	36.1	22.1	40.4	42.2	38.8	46.4	46.7	44.3	55.7	63.8	77.0	72.6	68.6	67.2	68.3	71.4	84.2	87.6	82.8
30/05/2018	22:36	5.0	102110	REG	87.3	70.7	23.1	3.4	41.9	39.4	40.1	37.6	43.2	41.2	39.0	39.7	48.0	57.7	69.0	67.0	63.7	73.1	72.8	73.6	77.2	89.3	82.1	81.2
31/05/2018	5:31	3.0	103225	REG	93.8	76.7	49.2	6.9	26.9	41.3	30.6	34.4	35.4	37.6	50.0	52.4	48.5	49.5	63.5	71.4	82.5	74.1	72.0	72.4	79.4	83.6	91.1	87.5
31/05/2018	6:25	3.0	103184	REG	87.4	74.9	23.3	5.5	41.4	41.6	34.4	35.8	39.4	37.3	36.4	45.1	44.0	58.3	68.0	78.8	78.5	69.1	67.3	67.6	69.2	77.9	83.9	77.4
31/05/2018	7:07	4.0	103217	REG	86.9	68.7	22.1	2.7	41.7	43.0	29.1	34.9	41.4	37.8	38.7	42.7	46.4	48.0	55.2	67.3	72.1	64.1	63.7	63.8	70.1	77.0	84.8	79.9
31/05/2018	7:18	17.0	103196	REG	83.3	66.8	14.6	2.2	26.9	36.1	30.6	37.8	44.9	38.0	40.5	35.8	52.3	62.5	58.9	60.8	63.9	68.9	63.7	66.2	77.9	72.2	75.5	79.0
31/05/2018	7:26	5.0	104061	TCS	95.7	78.6	60.8	8.5	42.8	41.5	38.7	39.4	47.9	44.6	49.3	51.0	60.6	73.1	73.2	73.0	72.0	74.7	72.7	76.8	89.6	91.1	88.6	87.8
31/05/2018	7:39	8.0	103227	REG	85.4	66.0	18.6	2.0	33.9	35.4	41.1	34.4	41.5	37.6	40.0	41.7	38.5	44.8	51.9	59.5	68.0	63.0	62.5	64.6	72.2	74.5	81.7	81.4
31/05/2018	7:43	3.0	103188	REG	85.8	67.1	19.5	2.3	36.8	41.1	40.3	31.7	39.2	35.8	37.0	43.9	50.7	50.8	58.4	58.7	62.3	66.0	68.6	68.6	79.0	74.6	79.8	81.9
31/05/2018	8:08	5.0	103190	REG	86.2	72.3	20.5	4.1	36.1	36.1	32.6	41.9	40.4	38.7	41.1	44.0	45.4	56.4	67.3	76.2	73.9	66.2	69.7	65.7	70.1	77.8	82.8	78.4
31/05/2018	8:25	6.0	103219	REG	91.3	75.7	36.7	6.1	34.9	39.4	22.1	40.6	40.0	37.8	48.5	53.5	48.7	51.6	62.3	72.3	82.6	71.6	66.6	69.8	71.9	77.6	89.1	83.6
31/05/2018	8:29	5.0	103216	REG	84.8	67.6	17.4	2.4	35.8	42.3	38.8	40.6	40.6	42.5	37.0	42.3	50.6	57.9	57.7	59.5	69.2	67.7	70.4	73.7	75.0	73.8	77.7	81.4
31/05/2018	8:57	5.0	103043	REG	92.4	76.0	41.6	6.3	31.7	22.1	33.9	38.8	35.8	39.4	46.1	49.6	48.2	49.2	61.6	70.5	82.0	74.8	73.2	77.4	78.2	79.7	89.8	85.3
31/05/2018	9:00	6.0	103208	REG	82.8	65.7	13.9	1.9	41.3	22.1	37.8	33.9	43.7	38.5	37.6	43.5	50.4	58.3	56.5	58.1	63.4	70.0	63.2	67.4	75.5	70.9	76.0	79.2
31/05/2018	9:32	3.0	103229	REG	90.8	76.1	34.5	6.4	40.3	40.8	41.9	37.6	42.1	31.7	48.3	52.7	45.5	54.7	58.9	73.1	83.2	72.5	70.4	70.8	74.8	79.2	87.4	84.1
31/05/2018	9:44	3.0	103862	REG	87.0	73.5	22.4	4.8	31.7	41.6	40.9	35.4	35.4	31.7	38.7	43.8	45.9	54.8	60.4	76.9	78.0	70.0	70.6	70.2	72.5	75.7	79.8	83.1
31/05/2018	10:24	3.0	103919	REG	89.7	69.4	30.4	3.0	40.6	39.2	39.8	41.6	41.7	36.8	40.0	43.2	46.3	49.1	60.3	67.3	68.5	63.2	66.6	65.4	71.8	78.2	82.8	88.0
31/05/2018	11:30	1.0	103223	REG	82.7	68.2	13.6	2.6	39.8	46.2	37.0	35.8	41.2	37.8	43.8	45.2	41.2	54.8	57.4	68.4	74.2	64.6	60.7	62.7	62.9	68.6	80.1	75.2
31/05/2018	11:34	10.0	103220	REG	87.1	68.6	22.6	2.7	32.6	36.1	40.6	39.2	41.5	40.9	33.3	41.5	46.8	53.3	65.4	61.0	64.9	70.3	66.5	66.7	78.1	77.4	79.1	84.5
31/05/2018	12:24	10.0	10091	REG	82.2	62.4	12.9	1.3	37.0	34.9	41.8	39.5	44.2	45.1	42.8	45.8	41.8	42.1	48.5	51.5	57.4	66.6	64.6	57.9	64.1	65.8	74.5	80.9

Data	Ora	Durata passaggio [s]	Codice	Categoria	ASSE Y - CH2																							
					Sintesi [dB - mm/s <sup>2</sup> ]				Leq - Frequenze [Hz] - Livelli [dB]																			
					L	L <sub>w</sub>	a	a <sub>w</sub>	1.0	1.3	1.6	2.0	2.5	3.2	4.0	5.0	6.3	8.0	10.0	12.5	16.0	20.0	25.0	31.5	40.0	50.0	63.0	80.0
30/05/2018	12:34	3.0	102914	REG	95.1	75.5	57.1	5.9	43.4	37.2	31.0	32.1	39.9	38.4	41.8	40.8	47.3	63.0	63.4	64.0	71.7	73.5	70.4	74.6	83.9	84.8	93.0	88.0
30/05/2018	15:10	6.0	103191	REG	94.2	75.2	51.0	5.7	43.6	40.1	39.9	43.1	44.5	41.5	44.8	55.6	53.1	51.4	71.8	73.9	68.0	64.9	67.6	66.9	76.8	83.2	93.2	82.9
30/05/2018	15:23	6.0	102993	REG	98.3	78.0	82.3	7.9	44.8	43.9	37.4	41.8	39.6	38.9	54.5	58.1	43.6	60.5	66.3	71.3	69.4	67.2	71.6	70.8	79.4	89.3	96.7	90.4
30/05/2018	15:46	5.0	103183	REG	99.7	80.1	97.1	10.1	34.3	39.9	31.0	34.8	41.6	40.2	40.4	53.8	54.6	56.4	64.6	80.4	77.2	71.0	73.2	73.1	83.8	87.1	97.3	94.9
30/05/2018	14:22	4.0	103200	REG	92.5	74.9	42.2	5.6	53.6	47.7	41.0	31.0	44.1	41.7	58.3	58.3	53.9	55.4	74.6	69.6	71.6	67.3	69.0	72.1	72.1	86.7	90.1	82.7
30/05/2018	14:24	5.0	102997	REG	90.3	71.3	32.9	3.7	46.4	37.2	38.7	39.9	37.7	36.8	39.6	49.8	49.1	53.7	69.9	65.6	67.4	62.6	63.1	61.8	72.5	81.0	88.0	84.5
30/05/2018	14:28	4.0	103202	REG	100.3	78.8	103.0	8.7	62.9	60.0	57.3	56.6	48.9	41.2	42.4	40.1	48.8	47.9	56.4	65.0	62.9	75.2	73.0	76.6	81.4	83.3	95.3	98.3
30/05/2018	14:44	2.0	102999	REG	97.3	79.4	73.6	9.3	45.1	46.5	37.2	36.5	44.8	34.3	43.4	56.8	55.3	57.1	74.2	81.9	76.8	69.7	69.7	67.1	76.5	82.9	95.6	91.1
30/05/2018	15:10	4.0	103204	REG	98.2	79.7	80.9	9.7	43.1	46.4	33.0	40.1	36.5	39.8	47.3	53.9	52.8	54.3	68.7	83.2	74.5	68.4	69.5	73.5	80.0	96.3	92.6	
30/05/2018	15:29	4.0	103101	REG	100.4	80.9	105.2	11.1	31.0	36.5	33.7	35.3	41.9	39.8	47.6	56.5	56.4	55.0	72.3	75.0	83.1	77.1	78.1	76.0	80.9	85.3	98.0	95.9
30/05/2018	16:10	3.0	103206	REG	95.5	77.4	59.4	7.4	32.1	36.5	34.3	39.2	42.6	38.2	40.2	44.2	50.4	54.3	62.3	77.0	82.1	71.4	67.9	69.0	72.9	74.5	92.7	91.4
30/05/2018	16:26	3.0	102109	REG	96.7	78.5	68.3	8.4	43.8	42.4	29.5	42.3	44.6	36.8	45.2	55.2	53.2	58.6	69.9	81.0	78.2	69.4	65.2	67.3	76.3	82.3	94.6	91.3
30/05/2018	16:57	4.0	102102	REG	93.2	73.2	45.7	4.6	40.8	36.5	34.3	40.8	45.6	40.2	45.1	50.4	47.1	52.8	65.1	73.0	67.6	64.8	66.4	65.2	73.8	83.1	88.3	90.6
30/05/2018	17:25	6.0	102111	REG	99.7	79.9	96.6	9.9	33.7	22.5	27.3	35.3	36.2	38.0	43.7	51.6	54.3	52.4	57.0	80.4	78.5	70.5	69.8	72.2	78.6	84.5	97.1	95.6
30/05/2018	17:42	3.0	103224	REG	101.2	80.8	114.7	11.0	40.1	36.5	39.9	33.0	40.2	40.5	52.0	60.0	53.2	53.3	67.2	76.9	78.6	76.0	74.0	82.2	88.6	98.6	96.8	
30/05/2018	18:06	5.0	103210	REG	97.1	78.0	71.9	7.9	41.5	41.9	34.3	39.4	36.5	45.4	43.2	54.8	47.7	51.9	64.6	75.2	81.3	69.6	68.9	67.3	74.9	83.8	95.0	91.9
30/05/2018	18:33	4.0	102103	REG	102.9	82.4	139.9	13.2	42.5	42.0	36.8	35.3	36.2	44.9	56.0	59.4	59.2	52.8	72.4	72.7	81.5	73.2	69.5	71.8	78.7	84.8	101.7	96.2
30/05/2018	19:04	4.0	103214	REG	100.2	80.9	102.9	11.1	38.9	41.5	31.0	27.3	22.5	38.4	55.5	58.5	56.8	57.5	74.2	75.0	83.7	75.7	75.6	75.1	78.7	86.8	97.3	96.3
30/05/2018	19:24	5.0	102110	REG	94.0	74.6	50.1	5.4	44.0	36.5	41.6	35.3	44.4	33.0	41.7	48.8	51.0	54.2	65.3	75.8	71.7	64.0	66.9	66.1	74.7	84.2	90.0	90.6
30/05/2018	19:58	5.0	103226	REG	94.7	76.3	54.6	6.5	34.8	41.9	37.2	41.7	43.9	39.6	43.6	50.8	47.6	44.9	60.8	75.6	79.8	70.4	69.8	71.2	72.7	80.1	93.2	87.8
30/05/2018	20:29	5.0	102115	REG	100.6	81.1	107.7	11.4	36.2	36.5	34.3	37.2	39.2	40.4	49.3	49.3	56.5	52.9	65.0	77.0	83.9	71.4	67.3	72.5	77.1	85.0	99.4	93.4
30/05/2018	20:59	3.0	102106	REG	100.4	81.0	104.2	11.3	43.4	41.8	41.7	35.3	39.9	42.4	55.2	59.0	51.3	56.7	73.3	80.5	78.4	74.6	76.7	74.1	81.6	90.6	98.0	94.7
30/05/2018	21:55	3.0	102107	REG	95.0	75.5	56.5	6.0	39.2	41.9	34.3	45.7	39.9	38.0	40.0	45.3	49.0	50.3	54.0	66.3	76.4	67.8	67.4	66.6	77.0	85.4	90.2	92.2
30/05/2018	22:08	8.0	103218	REG	98.5	78.7	83.9	8.6	43.9	36.5	40.8	39.6	36.2	44.4	57.6	57.9	47.6	54.3	69.7	77.8	75.6	74.6	71.6	71.2	77.6	88.5	94.9	94.8
30/05/2018	22:36	5.0	102110	REG	96.5	76.5	66.6	6.7	22.5	44.1	39.2	33.0	39.9	45.7	45.9	45.0	44.8	62.6	72.8	80.0	67.2	74.3	75.5	75.9	82.0	83.2	92.0	91.7
31/05/2018	5:31	3.0	103225	REG	103.3	82.4	145.4	13.1	37.4	36.5	33.0	33.0	40.8	41.9	55.3	59.0	57.9	56.3	69.2	74.1	81.3	74.4	75.2	74.9	82.1	86.7	100.2	99.9
31/05/2018	6:25	3.0	103184	REG	95.5	76.0	59.2	6.3	33.0	39.8	38.4	35.8	41.4	40.2	45.9	53.5	51.1	56.8	70.7	74.6	75.6	69.4	68.1	67.8	71.1	79.3	93.0	91.2
31/05/2018	7:07	4.0	103217	REG	96.2	76.5	64.7	6.7	35.3	36.5	41.5	33.7	41.7	36.5	42.5	48.1	46.2	50.7	57.7	77.2	76.2	67.7	64.1	67.7	76.1	80.9	93.3	92.5
31/05/2018	7:18	17.0	103196	REG	93.9	73.3	49.5	4.6	35.3	36.5	22.5	38.4	36.2	42.9	39.1	47.4	53.3	63.5	63.9	59.7	64.4	72.0	66.4	68.5	84.2	75.7	85.2	92.5
31/05/2018	7:26	5.0	106061	TCS	105.8	86.0	195.6	19.9	35.3	42.0	22.5	39.1	42.3	42.4	54.6	51.4	61.3	76.0	80.5	80.2	75.4	78.0	78.7	80.0	93.7	96.9	101.3	102.3
31/05/2018	7:39	8.0	103227	REG	98.2	76.1	81.1	6.4	40.8	36.5	29.5	33.7	36.2	35.8	39.6	44.2	39.1	46.6	52.7	59.4	65.8	68.4	67.0	67.5	79.3	81.6	90.8	97.1
31/05/2018	7:43	3.0	103189	REG	97.0	75.9	70.6	6.2	41.6	45.0	34.3	34.3	35.8	38.7	44.0	39.6	51.2	59.3	65.7	66.8	64.4	65.3	67.8	68.8	86.1	79.6	90.6	95.2
31/05/2018	8:08	5.0	103190	REG	95.3	75.8	58.0	6.2	39.2	46.3	31.0	33.0	45.1	33.7	45.7	52.6	47.6	56.8	70.0	75.1	74.4	69.0	68.8	67.2	73.5	83.6	92.4	91.1
31/05/2018	8:25	6.0	103219	REG	102.3	81.8	129.6	12.3	33.7	38.4	38.9	34.3	42.0	37.4	40.4	54.5	56.1	50.9	67.1	72.5	83.0	72.6	70.2	70.1	76.2	83.6	100.6	96.8
31/05/2018	8:29	5.0	103216	REG	97.8	75.8	77.7	6.2	34.8	36.5	34.3	37.2	36.2	37.7	37.2	41.7	55.7	60.0	56.2	56.0	66.6	67.4	73.7	72.8	79.2	80.7	88.9	97.0
31/05/2018	8:57	5.0	102443	REG	100.9	81.1	110.4	11.3	35.3	35.8	38.4	40.8	39.9	37.2	54.7	60.8	57.2	55.3	61.3	76.2	82.6	78.4	80.0	76.7	83.1	85.6	97.9	97.0
31/05/2018	9:00	6.0	103208	REG	93.7	72.7	48.3	4.3	33.7	35.8	36.2	39.1	38.9	40.1	39.4	42.2	47.1	63.8	59.6	55.5	69.4	71.0	67.8	69.8	80.5	74.0	85.3	92.6
31/05/2018	9:32	3.0	103229	REG	102.0	81.3	125.4	11.6	33.7	42.8	44.4	41.9	42.6	39.1	45.1	51.0	60.2	52.2	65.5	71.7	81.8	73.8	70.1	71.4	77.1	82.9	99.9	97.4
31/05/2018	9:44	3.0	103852	REG	97.1	76.5	71.9	6.7	40.1	39.4	31.0	39.4	39.9	39.9	41.0	50.3	47.6	56.5	62.0	71.2	79.2	70.7	68.9	71.7	78.8	77.7	89.2	96.1
31/05/2018	10:24	3.0	103919	REG	99.5	77.9	94.6	7.9	39.9	42.2	42.9	33.0	45.7	43.4	46.6	50.6	50.8	52.1	64.4	74.1	66.5	69.3	68.1	75.0	81.3	90.5	98.8	
31/05/2018	11:30	1.0	103223	REG	90.7	72.4	34.3	4.2	35.3	43.8	36.8	33.0	43.6	35.8	41.3	48.6	47.4	57.1	59.4	73.0	75.6	67.7	61.9	62.9	65.9	72.1	88.0	86.6
31/05/2018	11:34	8.0	103220	REG	97.7	76.2	76.4	6.4	29.5	44.4	31.0	35.3	45.5	43.6	40.1	45.9	51.6	57.6	69.9	64.1	67.5	73.2	69.7	68.6	81.4	79.8	89.4	96.7
31/05/2018	12:24	12.0	102091	REG	94.0	71.7	50.2	3.8	35.3	43.8	33.7	42.8	40.1	32.1	44.3	39.9	41.4	43.3	51.2	53.0	60.5	68.6	67.3	58.5	68.3	71.1	83.9	93.5

Data	Ora	Durata passaggio [s]	Codice	Categoria	ASSE Z - CH3																							
					Sintesi [dB - mm/s <sup>2</sup> ]				Leq - Frequenze [Hz] - Livelli [dB]																			
					L	L <sub>w</sub>	a	a <sub>w</sub>	1.0	1.3	1.6	2.0	2.5	3.2	4.0	5.0	6.3	8.0	10.0	12.5	16.0	20.0	25.0	31.5	40.0	50.0	63.0	80.0
30/05/2018	12:34	3.0	102914	REG	83.1	64.7	14.3	1.7	40.4	39.8	35.7	37.9	43.0	38.3	35.2	45.3	49.1	55.2	58.2	57.1	61.4	63.5	68.6	63.2	72.3	70.4	79.6	78.5
30/05/2018	12:10	6.0	103191	REG	78.8	62.7	8.7	1.4	45.5	45.0	39.0	40.6	41.4	43.0	44.1	46.2	46.5	48.4	58.8	63.4	60.0	63.5	63.0	60.9	64.6	67.2	76.6	70.7
30/05/2018	12:23	6.0	102993	REG	83.6	66.4	15.2	2.1	43.5	46.3	36.4	44.1	42.3	43.7	53.5	47.0	43.6	53.1	59.1	68.2	63.5	64.7	66.6	63.1	66.2	72.2	80.6	78.7
30/05/2018	12:46	5.0	103183	REG	86.5	70.1	21.2	3.2	35.2	41.8	30.9	40.6	43.5	36.7	40.9	41.4	51.1	52.8	53.9	72.6	73.1	67.2	67.2	65.0	74.5	72.2	81.1	83.5
30/05/2018	14:22	4.0	103200	REG	76.9	64.3	7.0	1.6	38.1	38.3	41.4	34.2	42.2	47.3	56.6	53.3	46.5	46.7	64.1	62.5	64.1	63.2	62.3	59.5	60.0	67.6	73.3	69.3
30/05/2018	14:24	5.0	102997	REG	75.0	61.2	5.6	1.1	40.9	37.1	43.1	34.2	41.7	40.0	44.3	50.1	45.0	44.6	60.6	58.7	63.8	63.0	54.7	54.9	58.1	65.1	70.7	69.9
30/05/2018	14:28	4.0	103202	REG	86.4	67.2	20.8	2.3	59.2	50.7	54.5	45.9	46.5	40.3	38.1	44.5	51.1	45.6	47.7	55.5	53.9	68.4	69.8	67.8	69.9	67.2	78.5	85.1
30/05/2018	14:44	2.0	102999	REG	82.5	69.0	13.3	2.8	34.7	46.6	39.5	37.3	36.1	43.0	42.3	47.5	47.1	49.3	65.5	72.9	70.3	64.9	63.9	64.5	66.5	67.8	77.9	78.0
30/05/2018	15:10	4.0	103204	REG	83.5	69.6	15.0	3.0	35.2	41.8	36.4	32.9	42.6	41.1	39.7	52.3	50.5	50.9	60.3	65.4	76.5	70.3	63.1	64.4	62.9	62.7	79.4	78.3
30/05/2018	15:29	4.0	103101	REG	87.1	73.9	22.6	5.0	39.0	40.9	40.4	42.7	35.7	41.4	51.5	52.7	50.9	44.5	65.1	68.5	81.3	73.8	70.4	67.0	67.8	69.7	80.9	82.7
30/05/2018	16:10	3.0	103206	REG	82.0	69.5	12.7	3.0	32.9	36.4	35.2	35.2	37.6	40.6	35.7	48.6	49.6	45.8	60.0	64.9	76.9	70.8	63.5	63.0	60.1	61.0	76.4	76.5
30/05/2018	16:26	3.0	103109	REG	80.7	67.6	10.9	2.4	34.7	42.3	41.6	39.3	41.6	37.3	41.6	42.1	48.9	52.8	58.3	70.5	71.9	66.4	62.6	63.7	65.1	65.6	75.6	75.9
30/05/2018	16:57	4.0	103102	REG	78.8	62.6	8.8	1.4	40.6	39.8	32.0	41.6	43.6	37.3	44.2	47.0	47.7	49.8	58.7	63.3	63.1	59.8	64.9	57.1	60.8	70.2	71.3	76.2
30/05/2018	17:25	6.0	103111	REG	84.7	69.2	17.1	2.9	40.0	42.3	34.2	41.3	44.7	36.1	40.9	41.2	48.6	51.2	54.9	70.3	74.5	65.2	67.9	66.0	69.3	67.5	79.4	81.4
30/05/2018	17:42	3.0	103224	REG	86.1	71.3	20.2	3.7	32.0	36.4	32.0	32.0	41.7	40.1	49.6	56.4	42.2	47.3	60.1	75.6	72.5	67.6	68.8	65.6	70.6	73.0	81.3	82.3
30/05/2018	18:06	5.0	103210	REG	81.2	66.3	11.5	2.1	42.0	41.8	34.2	39.1	36.1	40.0	46.4	51.1	47.5	48.3	56.7	68.4	70.0	64.5	66.5	59.8	64.5	69.3	76.9	76.7
30/05/2018	18:33	4.0	103103	REG	87.3	73.8	23.2	4.9	39.3	43.3	42.8	42.2	36.1	42.4	56.7	58.9	49.0	48.6	63.0	68.0	81.3	72.1	64.2	65.0	65.9	71.4	83.8	80.6
30/05/2018	19:04	4.0	103214	REG	86.0	72.1	20.1	4.0	40.0	36.4	37.3	40.1	22.4	38.8	54.0	56.1	46.5	50.1	63.1	72.2	78.1	69.7	69.6	66.8	68.2	72.3	80.8	81.8
30/05/2018	19:24	5.0	103110	REG	79.9	65.2	9.9	1.8	39.8	36.4	30.9	37.3	36.1	32.9	40.4	43.5	46.9	44.2	57.5	69.6	65.4	59.9	62.0	58.0	60.3	72.1	74.1	75.8
30/05/2018	19:58	5.0	103226	REG	81.5	70.7	11.9	3.4	42.1	43.0	42.3	40.3	41.8	40.0	43.3	47.8	45.7	43.5	57.1	75.8	73.8	60.2	64.7	61.2	60.1	68.3	76.7	73.0
30/05/2018	20:29	5.0	103115	REG	86.2	72.6	20.3	4.3	36.4	46.7	22.4	32.0	45.0	40.4	52.7	50.9	46.9	52.3	58.7	67.3	80.3	69.3	63.8	62.8	66.2	68.3	83.0	78.8
30/05/2018	20:59	3.0	103106	REG	85.9	71.3	19.7	3.7	33.6	36.4	30.9	27.2	42.7	41.9	53.2	51.8	46.8	50.2	63.4	76.0	68.7	67.8	68.8	67.0	72.1	77.5	81.7	79.9
30/05/2018	21:55	5.0	103107	REG	80.9	66.1	11.0	2.0	36.1	36.4	22.4	39.7	22.4	32.0	40.1	47.3	50.0	48.9	57.8	70.5	65.3	63.6	63.7	60.4	62.2	72.9	74.1	77.3
30/05/2018	22:08	8.0	103218	REG	83.8	69.0	15.5	2.8	38.6	36.4	22.4	38.6	36.1	45.8	53.8	53.7	47.5	49.3	63.3	72.9	68.6	66.3	66.5	62.5	68.1	74.5	77.6	80.3
30/05/2018	22:36	5.0	103110	REG	83.6	68.0	15.1	2.5	43.0	41.3	34.2	41.2	36.1	45.0	43.6	41.2	45.0	55.7	68.0	63.2	59.4	70.1	70.9	68.4	74.2	76.1	76.3	79.0
31/05/2018	5:31	3.0	103225	REG	89.1	72.9	28.6	4.4	42.6	36.4	38.6	38.6	41.7	42.5	51.3	56.1	54.9	49.0	62.1	68.0	79.3	70.0	70.5	70.0	70.8	74.8	84.3	85.8
31/05/2018	6:25	3.0	103184	REG	81.0	67.7	11.2	2.4	35.2	36.4	22.4	43.2	42.8	37.3	39.5	50.9	50.3	49.5	61.2	70.1	72.2	65.9	62.2	60.8	63.1	63.4	77.0	75.4
31/05/2018	7:07	4.0	103217	REG	81.9	68.1	12.5	2.5	32.9	36.4	22.4	41.2	41.2	41.8	44.1	42.1	47.3	47.6	55.4	70.0	73.8	64.1	62.4	58.1	65.7	66.9	77.8	76.7
31/05/2018	7:18	17.0	103196	REG	80.2	63.1	10.3	1.4	39.3	43.2	39.1	41.9	44.5	37.3	41.7	44.4	48.0	52.8	55.5	52.7	57.4	66.4	66.5	59.8	75.1	64.5	69.3	77.0
31/05/2018	7:26	5.0	104061	TCS	91.3	74.3	36.8	5.2	32.9	41.4	30.9	32.9	41.8	44.9	52.0	51.9	55.7	66.7	70.0	72.5	72.8	71.7	74.7	71.1	82.7	83.7	84.9	87.1
31/05/2018	7:39	8.0	103227	REG	83.6	62.8	15.2	1.4	30.9	40.8	22.4	32.9	36.1	35.7	33.6	40.9	39.0	41.2	44.6	51.3	60.8	63.0	63.5	61.5	66.9	68.5	74.8	82.6
31/05/2018	7:43	3.0	103188	REG	82.1	63.6	12.7	1.5	41.2	36.4	36.4	38.6	47.1	41.9	40.0	38.3	46.4	55.8	55.1	55.9	60.9	61.2	65.5	61.8	74.5	65.2	74.2	79.8
31/05/2018	8:08	5.0	103190	REG	80.4	66.2	10.5	2.1	42.2	35.7	38.8	38.1	40.9	22.4	42.4	48.7	47.5	49.8	59.8	68.7	69.5	65.7	65.7	60.8	63.0	68.5	75.6	75.8
31/05/2018	8:25	6.0	103219	REG	87.1	72.0	22.5	4.0	40.8	36.4	42.1	44.5	42.3	42.9	49.0	52.9	51.4	47.4	62.6	69.5	78.7	69.6	62.9	63.4	66.8	69.1	84.0	81.6
31/05/2018	8:29	5.0	103216	REG	83.2	63.8	14.4	1.5	34.2	36.4	29.4	42.6	41.6	38.6	35.2	41.7	51.0	52.9	51.1	53.5	60.3	64.1	69.3	66.1	69.2	67.0	72.6	82.0
31/05/2018	8:57	5.0	103043	REG	86.6	72.2	21.4	4.1	44.4	36.4	36.7	34.7	39.3	33.6	51.1	52.1	51.0	49.1	60.7	67.6	79.0	71.7	72.2	70.9	72.0	74.7	81.3	81.7
31/05/2018	9:00	6.0	103208	REG	79.0	62.1	8.9	1.3	36.4	35.7	22.4	27.2	38.3	36.7	38.3	42.9	49.4	51.1	53.8	53.9	63.5	65.6	66.6	61.1	69.3	60.9	68.9	76.9
31/05/2018	9:32	3.0	103229	REG	87.1	72.9	22.7	4.4	39.0	35.2	43.7	33.6	39.8	39.3	48.7	51.5	49.8	47.8	61.6	68.8	80.1	72.2	62.3	66.8	66.2	68.7	83.3	81.9
31/05/2018	9:44	3.0	103852	REG	82.9	66.8	13.9	2.2	40.4	36.4	35.2	39.3	41.3	39.3	35.7	48.1	47.0	54.9	65.3	72.6	66.4	66.3	64.0	67.5	65.2	74.0	81.0	
31/05/2018	10:24	3.0	103919	REG	84.5	66.1	16.7	2.0	38.6	41.8	38.1	39.0	36.1	36.7	43.2	43.1	48.5	49.4	56.2	67.6	68.3	60.9	64.0	60.8	63.2	69.4	74.4	83.5
31/05/2018	11:30	1.0	103223	REG	77.3	66.7	7.4	2.2	39.1	22.4	36.1	34.7	40.7	37.1	40.9	42.1	42.7	51.7	53.0	68.8	73.2	62.0	58.9	58.3	57.9	56.1	70.1	70.4
31/05/2018	11:34	1.0	103220	REG	83.1	65.4	14.3	1.9	45.8	46.6	34.7	30.9	36.4	41.2	43.9	44.9	49.2	51.6	63.9	56.8	61.1	68.5	64.6	62.8	73.9	70.7	72.7	81.2
31/05/2018	12:24	12.0	103091	REG	78.7	58.9	8.6	0.9	33.6	41.4	32.9	40.0	36.1	41.1	43.5	47.5	44.7	40.4	45.4	48.9	55.5	62.7	60.9	54.7	57.5	56.7	66.7	78.1

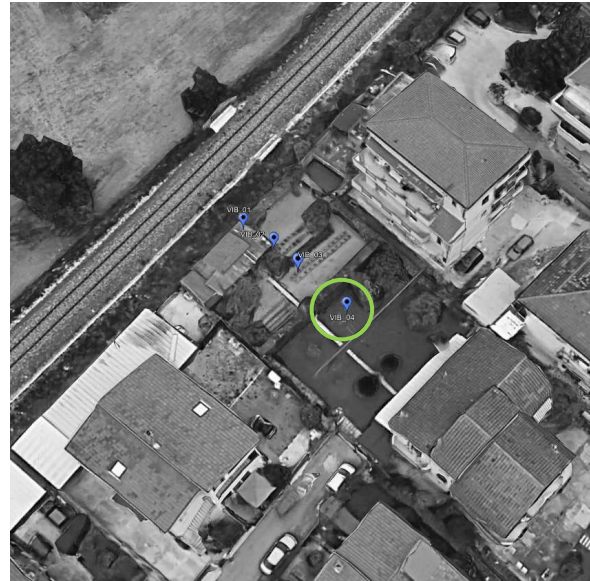
<b>Punto di Misura:</b>	VIB_4	<b>Comune:</b>	San Giovanni Teatino
-------------------------	-------	----------------	----------------------

<b>Provincia:</b>	Chieti	<b>Regione:</b>	Abruzzo
-------------------	--------	-----------------	---------

<b>Coordinate Nord</b>	42°25'14.44"N	<b>Data/Ora Inizio</b>	30/03/2018 – 12:00
<b>Coordinate Est</b>	14°11'2.36"E	<b>Data/Ora Fine</b>	31/03/2018 – 12:00

<b>Distanza dall'asse</b>	25,0 m dal binario	<b>Altezza dal p.c.</b>	0 m dal piano campagna
---------------------------	--------------------	-------------------------	------------------------

## REPORT FOTOGRAFICO E ORTOFOTO AEREA



# MISURE DI CARATTERIZZAZIONE VIBRAZIONALE

Data	Ora	Durata passaggio [s]	Codice	Categoria	ASSE X - CH1																								
					Sintesi [dB - mm/s <sup>2</sup> ]				Leq - Frequenze [Hz] - Livelli [dB]																				
					L	L <sub>w</sub>	a	a <sub>w</sub>	1.0	1.3	1.6	2.0	2.5	3.2	4.0	5.0	6.3	8.0	10.0	12.5	16.0	20.0	25.0	31.5	40.0	50.0	63.0	80.0	
30/05/2018	12:29	7.0	102091	REG	76.1	62.7	6.4	1.4	42.8	44.3	40.8	27.3	41.8	42.2	41.9	47.3	41.8	49.7	61.3	59.4	61.3	61.9	64.6	69.3	70.1	70.3	63.0	60.7	
30/05/2018	12:34	3.0	102094	REG	83.0	68.5	14.1	2.6	37.7	44.9	27.3	40.1	47.5	42.2	35.3	46.3	51.6	58.9	58.9	57.0	64.7	66.5	72.6	79.7	78.4	66.0	64.2	59.8	
30/05/2018	12:40	6.0	102091	REG	84.7	71.4	17.2	3.7	44.6	39.1	42.7	41.6	44.4	41.7	42.2	42.5	47.4	52.8	61.5	71.4	74.0	68.4	77.1	78.5	77.7	75.7	73.7	69.0	
30/05/2018	12:23	6.0	102093	REG	82.9	68.2	13.9	2.6	45.5	40.3	43.8	44.6	40.7	41.4	49.0	46.2	44.9	51.9	59.5	65.4	64.7	68.7	74.6	77.1	76.7	76.1	69.0	65.1	
30/05/2018	13:46	5.0	102193	REG	84.8	70.5	17.4	3.3	47.2	44.3	48.9	47.6	46.1	41.4	41.1	45.6	47.7	56.5	59.7	69.6	72.5	68.1	71.5	77.8	80.5	77.5	72.9	67.8	
30/05/2018	14:02	4.0	102200	REG	87.1	75.3	22.7	5.8	47.7	52.2	45.6	47.0	46.2	46.3	45.2	48.2	50.1	54.3	64.3	77.9	78.5	67.6	75.6	83.3	78.5	74.3	73.7	65.9	
30/05/2018	14:24	5.0	102097	REG	80.2	66.3	10.3	2.1	47.7	46.0	48.7	40.1	44.7	44.8	43.4	50.4	48.1	51.7	58.8	67.3	69.7	67.5	65.3	67.1	69.7	74.4	74.0	73.3	61.5
30/05/2018	14:28	4.0	102202	REG	79.2	64.7	9.1	1.7	47.9	43.0	55.5	48.1	49.5	46.7	46.1	44.6	48.9	49.7	52.3	56.5	57.6	62.4	66.6	73.4	76.0	70.0	62.5	56.6	
30/05/2018	14:44	2.0	102099	REG	80.8	68.1	11.0	2.6	53.4	54.1	44.2	50.3	50.3	42.1	41.9	51.1	46.3	50.7	62.0	66.2	72.3	66.4	65.1	73.2	75.1	71.5	73.1	61.1	
30/05/2018	16:10	4.0	102004	REG	81.5	69.9	11.9	3.1	55.3	54.6	53.4	45.7	45.8	47.2	47.1	48.0	46.4	53.6	62.2	72.1	72.3	70.5	63.9	70.6	76.5	71.2	73.1	64.4	
30/05/2018	16:29	4.0	102101	REG	86.8	73.5	21.9	4.7	59.3	50.5	49.1	40.4	45.9	45.7	44.7	53.8	51.0	50.2	62.9	69.5	78.6	75.1	72.8	76.3	81.8	79.7	76.8	69.0	
30/05/2018	16:40	3.0	102206	REG	80.7	68.5	10.9	2.7	49.1	45.1	42.9	48.3	39.1	44.7	44.7	43.6	46.7	52.9	56.1	70.3	72.7	69.4	65.6	68.5	74.4	73.6	71.9	64.4	
30/05/2018	16:26	3.0	102109	REG	82.3	67.7	13.1	2.4	42.3	40.3	32.1	39.9	47.9	42.3	46.7	45.6	43.6	49.8	62.4	69.1	67.8	66.2	63.8	70.2	76.8	77.5	75.1	59.7	
30/05/2018	16:57	4.0	102102	REG	83.2	66.9	14.5	2.2	33.0	42.4	44.8	43.7	45.3	46.6	44.8	42.4	43.6	49.6	61.7	66.8	63.0	62.1	65.0	65.3	75.4	81.7	70.2	60.6	
30/05/2018	17:25	6.0	102111	REG	85.2	70.0	18.2	3.2	41.6	49.8	48.8	44.3	43.5	40.3	42.2	45.3	42.9	47.7	59.4	70.3	73.1	64.2	67.6	68.3	79.7	81.7	75.7	65.6	
30/05/2018	17:42	3.0	102324	REG	87.1	72.2	22.6	4.1	43.1	43.0	46.9	43.0	46.0	47.2	47.1	50.6	47.0	52.4	62.6	73.6	75.5	63.2	67.5	71.4	80.7	83.5	79.1	67.3	
30/05/2018	18:06	5.0	102210	REG	83.9	69.2	15.6	2.9	40.4	39.9	47.3	43.8	45.7	45.6	44.1	53.7	45.1	51.2	56.5	71.1	72.2	64.3	67.5	65.8	75.5	80.5	77.1	62.1	
30/05/2018	18:33	4.0	102103	REG	87.9	73.3	24.9	4.7	39.4	27.3	44.4	43.4	42.8	48.3	47.2	51.2	53.8	54.1	61.9	65.9	79.8	70.3	68.4	70.8	78.7	85.1	79.2	68.2	
30/05/2018	19:04	4.0	102314	REG	87.8	73.5	24.6	4.7	39.1	45.2	43.6	49.0	41.3	42.6	45.9	46.5	48.0	49.8	64.1	70.4	79.7	65.5	70.7	72.7	79.3	87.7	81.4	67.4	
30/05/2018	19:24	5.0	102110	REG	84.0	66.8	15.8	2.2	37.2	38.5	45.4	46.6	44.8	41.3	39.8	47.8	44.8	45.2	58.5	63.5	62.6	65.2	64.5	66.2	75.1	82.6	72.7	60.2	
30/05/2018	19:58	6.0	102326	REG	87.2	72.0	22.9	4.0	46.3	47.3	39.9	46.1	41.9	41.8	47.2	49.8	48.9	52.8	58.9	74.0	74.9	64.2	68.3	68.7	78.9	83.5	81.6	64.7	
30/05/2018	20:29	5.0	102116	REG	86.9	71.1	22.2	3.6	41.3	39.4	42.8	40.9	40.4	41.1	44.4	48.7	51.5	47.0	57.6	65.9	76.1	64.3	67.1	70.4	78.2	85.0	76.2	64.3	
30/05/2018	20:59	3.0	102106	REG	88.6	72.7	26.9	4.3	41.8	37.2	47.6	34.3	45.4	43.1	48.1	49.5	46.2	49.1	60.9	75.2	71.1	64.9	70.4	66.1	80.3	86.6	79.5	63.3	
30/05/2018	21:25	5.0	102107	REG	82.4	65.6	13.2	1.9	49.0	38.7	43.8	36.5	39.1	41.9	39.4	42.6	51.1	48.0	54.5	65.2	63.4	59.0	62.2	64.3	74.5	79.8	75.8	63.1	
30/05/2018	22:08	8.0	102218	REG	86.7	72.2	21.6	4.1	46.7	38.2	32.1	41.4	35.8	46.1	41.4	40.9	47.7	46.1	50.0	58.0	76.1	72.3	63.7	69.9	68.1	78.3	83.7	79.3	62.3
30/05/2018	22:36	5.0	102110	REG	92.5	75.4	42.2	5.9	45.8	35.3	38.5	46.6	50.2	42.1	45.9	40.3	46.3	58.0	63.4	61.7	64.2	71.3	76.7	75.3	89.8	88.5	72.6	61.1	
31/05/2018	5:31	3.0	102225	REG	91.2	75.1	36.4	5.7	37.2	44.5	44.6	44.1	44.9	42.7	49.9	54.5	51.5	51.8	56.8	69.6	78.1	68.6	74.9	73.2	87.9	86.4	80.7	73.7	
31/05/2018	6:25	3.0	102184	REG	82.3	69.5	13.0	3.0	31.0	42.4	43.2	38.0	44.0	43.1	43.9	43.5	46.7	56.0	49.8	67.5	76.5	62.3	66.3	68.6	73.2	75.9	76.3	62.5	
31/05/2018	7:07	4.0	102217	REG	86.0	69.7	19.9	3.1	40.9	43.7	34.3	38.0	46.8	41.2	44.8	46.9	47.8	46.1	59.4	66.5	70.0	63.3	65.8	70.9	83.2	81.0	74.3	62.3	
31/05/2018	7:18	17.0	102186	REG	86.0	69.3	20.1	2.9	41.1	45.7	44.5	39.9	36.5	40.1	41.1	47.4	47.6	57.2	52.6	52.5	59.2	67.0	66.3	69.0	84.6	79.5	66.9	59.5	
31/05/2018	7:26	5.0	102061	TCS	86.3	69.8	20.8	3.1	41.4	35.3	42.8	43.1	45.4	46.5	49.0	48.3	50.8	55.3	67.9	62.8	59.0	61.7	58.5	65.9	81.9	84.0	69.1	61.3	
31/05/2018	7:39	8.0	102227	REG	80.9	63.6	11.1	1.5	40.8	41.2	45.4	44.8	46.3	42.7	42.9	42.0	43.9	41.7	48.5	53.2	57.5	59.3	64.7	65.1	75.9	77.6	72.0	64.9	
31/05/2018	7:43	3.0	102188	REG	88.2	70.9	25.8	3.5	45.2	46.6	39.4	42.4	43.0	38.0	41.2	40.9	47.4	49.6	53.3	54.8	60.9	63.8	65.4	70.6	86.3	83.0	72.3	64.8	
31/05/2018	8:08	3.0	102180	REG	80.7	68.5	10.8	2.7	42.9	47.0	35.3	45.0	43.6	40.4	45.3	42.8	46.9	53.5	53.4	71.9	72.4	62.6	67.0	64.7	71.2	75.6	73.7	58.5	
31/05/2018	8:25	6.0	102216	REG	85.6	71.3	19.2	3.7	39.3	43.0	38.9	38.0	43.8	43.4	46.2	48.6	44.1	50.5	56.7	66.4	77.5	66.1	67.1	71.6	80.0	81.1	76.7	68.0	
31/05/2018	8:29	5.0	102216	REG	83.8	66.9	15.5	2.2	41.7	45.4	43.2	39.6	48.1	39.4	40.7	47.8	50.9	54.1	51.9	52.4	62.6	63.1	66.3	67.2	80.6	79.9	70.3	64.6	
31/05/2018	8:57	5.0	102043	REG	90.7	75.2	34.3	5.8	41.4	47.3	46.8	39.8	39.6	45.3	44.6	51.1	49.7	52.3	62.4	70.0	78.8	77.1	72.6	77.4	85.3	87.2	79.4	72.0	
31/05/2018	9:00	6.0	102208	REG	84.0	67.6	15.8	2.4	47.1	41.1	41.4	40.1	44.3	49.1	42.8	43.0	48.9	51.4	54.7	56.8	62.2	64.3	63.1	70.1	83.0	74.2	65.9	58.9	
31/05/2018	9:32	3.0	102329	REG	85.6	72.3	19.0	4.1	46.2	41.9	43.1	42.0	47.0	43.1	47.3	51.5	51.0	49.6	58.6	68.0	79.0	68.8	70.6	78.7	79.5	77.3	72.7		
31/05/2018	9:44	3.0	102882	REG	84.7	70.5	17.2	3.4	38.2	43.5	41.7	41.7	46.3	47.7	38.2	46.1	47.0	54.7	61.9	68.1	75.6	65.2	67.8	68.9	81.4	78.0	74.5	65.1	
31/05/2018	10:24	3.0	102918	REG	82.2	66.2	12.8	2.0	48.2	45.0	39.1	47.9	48.5	41.3	43.3	44.8	50.0	47.7	59.5	65.6	64.4	61.4	65.6	68.6	75.7	78.9	73.3	69.5	
31/05/2018	11:30	1.0	102223	REG	60.1	56.1	1.0	0.6	47.3	47.5	42.7	46.1	47.6	41.3	45.2	47.2	50.0	43.0	46.6	49.5	47.4	48.2	46.5	46.8	50.0	48.7	44.3	45.2	
31/05/2018	11:34	8.0	102220	REG	60.1	55.0	1.0	0.6	50.2	43.4	44.1	44.8	42.8	39.1	42.8	44.5	45.3	42.6	43.1	47.5	49.8	52.0	44.9	46.1	52.4	49.4	44.0	45.0	

Ora	Durata passaggio [s]	Codice	Categoria	ASSE Y - CH2																							
				Sintesi [dB - mm/s <sup>2</sup> ]				Leq - Frequenze [Hz] - Livelli [dB]																			
				L	L <sub>w</sub>	a	a <sub>w</sub>	1.0	1.3	1.6	2.0	2.5	3.2	4.0	5.0	6.3	8.0	10.0	12.5	16.0	20.0	25.0	31.5	40.0	50.0	63.0	80.0
9:29	7.0	10091	REG	78,3	67,4	8,2	2,3	33,6	44,1	42,2	38,1	37,9	43,1	39,8	44,8	41,2	46,8	68,0	68,0	63,0	67,9	71,7	69,9	66,2	71,0	63,5	64,5
9:34	3.0	9399 H	REG	81,7	68,8	12,2	2,7	44,6	44,4	41,8	38,1	43,8	41,2	48,0	46,8	50,2	63,6	59,3	62,3	68,8	68,3	75,0	77,5	75,0	63,8	66,0	63,6
9:10	6.0	103191	REG	86,8	75,7	21,9	6,1	50,7	45,3	42,1	44,2	40,8	45,5	44,1	50,3	52,5	54,0	65,6	80,2	76,2	68,1	77,8	81,1	76,4	73,3	76,2	74,1
9:23	6.0	100993	REG	83,9	71,3	15,7	3,7	43,0	48,4	44,0	44,2	43,8	42,0	51,6	55,9	46,3	58,8	62,9	73,7	66,5	71,7	76,7	77,8	74,5	76,4	70,6	70,4
9:46	5.0	103193	REG	86,3	75,2	20,7	5,8	47,3	43,0	46,7	45,6	46,4	42,6	46,9	54,5	50,5	58,1	63,0	78,9	78,5	66,9	74,4	81,4	75,8	72,9	75,9	70,4
10:02	4.0	103200	REG	89,2	78,3	29,0	8,2	49,8	43,6	51,4	41,2	46,5	36,8	52,1	54,7	51,9	53,5	70,8	81,3	81,9	70,3	75,0	86,0	75,3	73,6	75,7	65,7
10:24	5.0	100977	REG	82,2	71,9	12,9	3,9	40,0	48,0	41,7	46,2	49,8	46,2	44,8	53,9	49,2	53,4	66,9	76,4	71,3	66,5	68,6	77,0	72,4	69,4	71,3	63,5
10:28	4.0	103202	REG	81,4	67,0	11,8	2,2	53,7	41,6	41,0	47,8	44,0	44,2	43,5	47,6	48,7	49,2	55,8	60,1	57,9	62,1	67,9	80,2	72,1	66,6	61,4	61,9
10:44	2.0	100999	REG	83,5	73,3	15,0	4,6	52,3	53,8	42,8	41,4	49,4	44,1	47,3	55,6	51,5	57,4	70,7	76,8	75,2	66,6	65,8	77,2	72,9	67,3	76,4	61,8
9:10	4.0	103204	REG	81,4	70,8	11,8	3,4	53,0	51,1	46,2	46,3	45,8	44,3	47,6	52,8	54,1	51,6	64,5	71,8	75,9	68,1	70,9	72,3	72,0	69,2	72,4	64,5
9:29	4.0	100101	REG	87,3	74,7	23,2	5,4	59,2	51,8	49,9	44,6	38,1	49,1	50,5	54,1	57,0	55,9	67,2	73,5	79,0	71,5	77,0	82,4	78,7	75,2	78,9	66,6
9:10	3.0	100206	REG	81,1	69,6	11,3	3,0	41,2	38,6	32,9	37,9	45,8	39,5	44,3	48,8	49,4	51,6	62,1	72,4	73,1	68,4	69,9	71,5	73,7	69,8	73,0	66,9
9:28	3.0	100109	REG	82,5	72,3	13,3	4,1	44,2	46,1	42,7	42,3	43,9	48,7	46,6	55,1	50,3	51,8	68,1	76,8	73,2	63,9	66,9	74,2	74,6	70,6	74,0	61,7
10:57	4.0	100102	REG	81,1	67,8	11,4	2,5	41,5	42,5	47,7	43,0	45,2	47,4	44,7	52,6	47,4	52,1	65,5	69,8	66,3	61,0	65,0	70,4	75,5	77,2	68,3	62,4
17:25	6.0	102111	REG	85,0	73,4	17,9	4,7	47,3	50,7	44,5	41,1	44,9	44,7	48,2	53,1	52,6	51,5	61,7	77,9	75,3	62,3	70,5	73,3	79,4	76,5	77,0	67,1
17:42	3.0	100224	REG	86,1	74,0	20,1	5,0	34,2	46,7	35,2	46,2	41,5	47,5	53,5	60,8	51,3	53,8	68,2	77,1	76,7	68,5	70,4	74,4	81,2	76,4	79,0	65,4
9:08	5.0	103210	REG	84,6	71,8	17,1	3,9	37,6	36,4	39,0	49,1	39,8	42,4	39,5	52,5	50,9	47,1	58,2	69,7	78,4	66,4	68,2	68,3	80,6	74,9	76,6	64,3
9:23	4.0	100103	REG	87,2	72,0	22,8	4,0	44,3	37,4	38,6	39,0	39,5	45,7	53,7	57,6	57,3	49,0	68,3	70,9	74,0	65,0	70,6	74,0	80,0	82,5	81,8	67,1
9:04	4.0	103214	REG	88,8	76,5	27,6	6,7	42,2	39,3	40,8	40,3	38,1	46,3	51,8	50,7	55,2	53,3	68,5	75,6	83,1	71,7	71,4	75,3	82,5	79,8	82,3	69,3
9:24	5.0	102110	REG	83,3	69,6	14,6	3,0	39,2	44,4	37,9	32,9	46,3	43,5	43,7	50,0	47,9	50,6	67,1	72,3	66,9	63,7	66,4	68,8	79,1	78,4	72,3	65,0
9:58	5.0	100226	REG	86,5	73,8	21,1	4,9	45,8	44,5	47,5	35,2	42,4	41,9	52,1	57,1	52,3	48,5	65,7	76,9	77,0	68,4	68,3	73,1	81,0	78,5	80,3	65,5
20:29	5.0	100115	REG	86,1	69,1	20,1	2,9	40,7	41,8	47,9	41,5	38,1	43,2	45,6	46,1	51,0	49,7	61,7	66,9	69,1	64,6	67,8	72,1	77,7	82,2	81,4	64,5
20:59	3.0	100106	REG	86,2	72,8	20,4	4,3	34,2	49,9	46,9	49,5	41,5	44,5	50,8	59,1	51,1	50,4	68,1	75,2	72,7	71,0	70,4	72,4	81,9	79,8	78,0	64,0
11:25	5.0	100107	REG	82,4	69,0	13,1	2,8	43,6	41,7	37,9	41,2	50,2	34,2	47,8	48,3	46,0	48,0	66,1	72,3	66,2	64,1	65,4	67,1	77,1	78,0	72,8	62,0
22:08	8.0	103216	REG	86,2	74,2	20,3	5,1	39,2	39,8	40,3	37,9	43,0	40,4	51,4	55,0	50,0	52,1	65,2	78,9	75,1	65,9	70,6	71,2	80,3	79,2	78,9	63,0
22:35	5.0	100110	REG	89,5	73,4	29,7	4,7	41,8	42,6	41,7	48,9	43,8	44,3	43,4	48,8	49,3	55,9	68,9	66,4	66,3	73,2	75,4	76,5	86,5	84,8	71,3	65,2
5:31	3.0	100225	REG	90,9	74,2	35,1	5,2	37,6	47,2	40,2	38,1	45,3	44,8	46,1	56,6	55,4	52,9	58,1	69,1	74,3	65,6	75,3	76,4	87,6	85,2	82,9	71,9
6:25	3.0	103194	REG	84,7	72,6	17,1	4,2	38,1	37,6	36,4	41,0	49,4	40,6	45,0	43,6	51,2	54,7	55,3	73,2	78,9	66,9	69,6	72,2	78,2	74,7	78,1	63,6
7:07	4.0	103217	REG	84,4	71,0	16,6	3,6	33,6	40,3	41,4	41,7	44,3	38,8	41,7	47,9	47,7	48,2	65,3	74,7	71,0	62,8	65,7	70,6	80,5	76,8	77,1	64,0
7:11	9.0	103186	REG	85,0	69,1	17,8	2,8	44,2	45,8	43,5	40,8	45,6	43,3	41,6	40,7	49,9	62,2	57,8	52,5	61,9	68,2	64,7	68,0	84,4	71,3	66,4	62,2
7:26	5.0	E60061	TCS	84,4	76,8	16,5	6,9	44,7	48,1	38,4	40,2	45,1	46,1	47,6	50,9	53,2	58,7	81,3	70,2	60,7	62,0	67,1	68,9	79,2	73,5	66,3	52,7
7:39	8.0	100227	REG	82,3	65,7	13,1	1,9	36,1	46,9	38,6	43,6	37,1	40,3	39,3	45,2	47,8	48,0	48,5	58,9	63,9	58,8	65,5	70,0	79,8	74,4	73,6	69,0
7:43	3.0	103188	REG	88,4	71,7	26,3	3,9	43,7	40,4	45,7	40,8	44,7	48,3	46,0	45,0	48,6	54,1	61,1	60,3	64,8	65,4	69,1	72,1	87,4	79,7	70,4	67,5
8:08	5.0	103190	REG	81,9	71,3	12,4	3,7	44,3	46,0	44,6	36,4	46,2	38,8	42,3	41,2	46,1	52,8	55,1	75,9	74,9	61,3	63,5	68,7	74,9	70,6	74,6	59,7
8:25	6.0	103219	REG	85,2	69,4	18,2	3,0	42,5	39,3	40,7	39,3	40,6	43,3	50,8	49,8	50,6	52,1	55,7	68,6	73,1	64,5	65,0	72,2	78,7	77,7	81,6	66,3
8:29	5.0	103218	REG	83,2	67,5	14,4	2,4	41,6	47,0	40,0	41,2	45,8	46,5	34,2	39,5	55,4	54,8	51,4	57,3	66,5	62,5	70,3	74,8	80,2	76,2	69,3	66,9
8:57	5.0	103143	REG	91,3	76,3	36,7	6,5	37,4	44,5	44,4	36,1	47,7	47,4	54,7	57,3	53,1	53,9	63,8	72,8	78,7	77,4	77,1	82,2	87,4	84,7	80,7	71,9
9:00	6.0	100208	REG	84,1	68,4	16,0	2,6	41,6	47,2	44,1	41,4	48,7	43,3	40,4	44,3	53,0	61,8	53,8	55,4	64,2	67,7	63,6	69,0	83,4	69,0	66,6	63,2
9:32	3.0	100229	REG	86,1	71,3	20,2	3,7	37,4	42,6	40,0	38,6	41,1	38,1	47,6	55,7	59,2	53,3	62,4	71,0	74,0	65,2	71,2	76,5	80,4	77,0	81,3	70,4
9:44	3.0	123682	REG	85,3	73,0	18,4	4,5	27,2	44,4	44,6	43,6	42,6	40,3	42,2	50,0	53,4	57,1	61,0	74,2	78,4	66,9	70,4	73,0	81,4	73,7	75,7	66,7
10:24	3.0	103118	REG	82,4	69,8	13,2	3,1	41,4	42,3	39,5	42,9	41,8	45,8	41,8	51,6	47,3	55,4	65,7	73,7	68,5	63,8	66,6	71,1	76,9	75,3	72,8	72,3
11:30	1.0	100223	REG	59,0	54,1	0,9	0,5	41,5	40,3	41,5	43,7	49,9	41,6	40,4	47,9	36,4	43,1	44,9	47,1	46,7	48,4	48,2	47,6	49,7	44,9	45,5	45,3
11:34	8.0	100220	REG	60,7	55,0	1,1	0,6	36,1	41,2	43,2	48,1	45,3	45,9	47,0	44,6	45,1	46,3	46,4	47,5	49,6	51,1	50,4	49,8	53,2	45,7	45,8	46,7



Ora	Durata passaggio [s]	Codice	Categoria	ASSE Z - CH3																								
				Sintesi [dB - mm/s <sup>2</sup> ]				Leq - Frequenze [Hz] - Livelli [dB]																				
				L	L <sub>w</sub>	a	a <sub>w</sub>	1.0	1.3	1.6	2.0	2.5	3.2	4.0	5.0	6.3	8.0	10.0	12.5	16.0	20.0	25.0	31.5	40.0	50.0	63.0	80.0	
2:29	7.0	10091	REG	72,8	60,5	4,4	1,1	39,5	46,5	43,2	40,0	43,4	38,8	40,9	46,0	44,7	46,1	61,7	58,8	58,5	59,7	57,7	55,8	57,2	66,0	68,2	64,8	
2:34	3.0	1039 H	REG	74,6	61,8	5,4	1,2	48,9	39,5	44,6	47,8	42,8	40,1	42,5	47,8	48,1	55,2	52,4	60,0	64,4	62,4	62,9	60,5	65,0	61,5	70,3	66,5	
3:10	6.0	103191	REG	83,2	71,9	14,5	4,0	49,7	52,2	31,8	43,2	47,8	43,0	50,8	49,3	50,0	50,7	56,8	77,6	73,2	62,9	66,2	64,3	66,7	68,4	77,8	77,4	
3:23	6.0	10093	REG	78,6	64,6	8,5	1,7	42,0	46,6	37,2	45,6	46,5	38,4	51,4	51,4	41,9	52,4	57,8	67,0	63,6	64,5	67,1	63,3	64,0	70,1	72,6	73,6	
3:46	5.0	103193	REG	81,9	71,0	12,4	4,3	3,5	50,8	46,8	45,2	47,9	48,1	49,6	47,8	51,1	50,0	50,0	60,5	76,2	72,4	62,6	63,5	64,3	67,0	67,8	76,0	75,4
4:02	4.0	103200	REG	82,4	72,7	13,2	4,3	45,4	46,9	48,4	51,3	41,2	47,0	48,8	48,4	50,7	50,2	66,1	77,4	75,7	67,1	64,5	65,1	62,4	67,5	75,5	73,9	
4:24	5.0	10097	REG	78,5	67,9	8,5	2,5	46,3	45,0	45,3	46,8	41,6	44,0	51,7	49,3	49,8	46,2	61,3	72,6	70,0	60,0	58,5	60,9	60,7	67,3	70,4	73,2	
4:28	4.0	103202	REG	72,3	64,2	4,1	1,6	58,6	46,6	58,1	57,2	49,7	47,4	48,9	49,8	51,6	42,8	49,7	56,4	55,4	56,3	56,2	60,6	63,1	59,7	60,7	68,8	
4:44	2.0	10099	REG	79,0	70,2	8,9	3,2	59,0	59,6	51,0	49,1	52,6	48,2	49,2	41,0	51,4	51,9	63,7	74,5	69,6	64,3	55,6	59,9	60,8	62,8	72,7	70,7	
5:10	4.0	103204	REG	78,3	68,7	8,2	2,7	59,4	58,9	50,9	40,0	43,9	51,3	49,4	48,4	49,2	49,7	58,6	68,8	73,7	65,4	58,0	58,3	62,0	61,2	70,7	71,3	
6:29	4.0	10011	REG	81,6	71,3	12,0	3,7	64,7	53,8	55,2	48,0	47,5	41,9	52,5	53,3	51,4	46,4	62,7	68,7	76,8	67,6	65,3	67,0	67,2	67,4	74,2	75,0	
6:10	3.0	103206	REG	78,1	68,2	8,0	2,6	49,5	45,8	43,7	45,2	48,4	45,4	47,0	47,2	50,8	47,5	56,5	70,3	74,6	60,8	59,7	57,5	60,5	61,2	68,8	70,6	
8:28	3.0	10019	REG	78,3	69,9	8,2	3,1	43,9	48,5	42,2	40,1	44,0	43,9	46,7	51,5	49,9	52,0	57,6	75,9	69,0	63,9	59,0	59,3	63,2	63,9	68,8	65,0	
8:57	4.0	10012	REG	73,9	63,0	4,9	1,4	47,2	44,7	40,1	41,9	44,2	45,0	44,5	46,9	50,8	46,5	61,7	65,8	62,1	58,4	56,5	62,2	69,0	62,6	66,1		
9:25	6.0	102111	REG	80,5	71,6	10,6	3,8	46,3	47,1	44,1	35,9	46,8	42,5	45,8	44,7	48,5	44,3	55,8	77,6	72,3	61,3	62,4	61,2	65,9	67,4	70,7	70,3	
9:42	3.0	103214	REG	80,9	70,8	11,0	3,5	42,3	45,5	41,6	45,1	44,6	44,1	55,4	50,3	47,6	51,2	66,8	74,4	74,5	63,9	61,4	58,7	66,7	69,2	75,7	67,8	
9:08	5.0	103210	REG	77,3	66,8	7,3	2,2	41,7	42,3	45,1	31,8	35,9	40,4	47,2	49,4	46,5	51,6	55,4	67,8	73,5	59,2	60,6	54,9	63,1	66,9	70,5	66,4	
9:23	4.0	103103	REG	80,1	69,6	10,1	3,0	47,5	44,5	41,0	37,4	39,0	47,5	55,5	55,6	51,1	48,4	62,7	66,6	76,9	64,9	59,4	59,1	64,2	71,2	72,4	68,4	
9:04	4.0	103214	REG	81,4	71,4	11,8	3,7	43,8	47,3	44,0	41,6	39,5	46,9	50,5	50,7	49,1	49,8	61,3	74,8	76,5	69,0	64,3	62,7	65,9	69,9	74,5	68,9	
9:24	5.0	10210	REG	73,8	62,1	4,9	1,3	38,8	37,9	42,1	38,6	39,5	41,0	45,6	46,9	49,5	47,3	59,2	65,1	61,2	62,6	58,0	54,8	61,9	68,6	65,5	65,4	
9:58	5.0	103226	REG	80,0	69,3	10,0	2,9	33,4	45,6	44,9	43,8	43,4	44,4	53,6	48,1	46,3	47,5	61,0	72,4	74,2	67,5	61,3	59,9	62,2	69,5	75,0	66,3	
20:29	5.0	10215	REG	78,8	67,7	8,7	2,4	47,1	48,1	48,3	42,5	48,3	44,6	54,2	50,3	47,8	48,4	54,4	67,5	74,4	63,3	56,8	58,2	62,3	69,7	73,8	65,3	
20:59	3.0	10016	REG	81,0	71,5	11,2	3,7	40,2	45,3	38,8	36,6	43,3	45,8	52,7	49,1	46,1	48,8	65,4	76,1	73,7	70,5	61,3	60,6	66,3	71,7	72,9	67,1	
21:25	5.0	10017	REG	74,2	63,9	5,1	1,6	35,0	45,8	41,1	43,1	37,9	39,8	46,2	44,4	47,4	47,0	57,0	69,2	63,1	58,3	54,8	53,4	62,1	65,0	67,3	65,7	
22:08	8.0	103218	REG	81,0	72,1	11,3	4,0	36,2	39,5	39,1	40,4	38,4	43,9	50,5	51,1	46,4	47,1	62,2	77,2	75,0	66,8	61,5	61,0	63,4	69,5	72,5	66,6	
22:35	5.0	10210	REG	78,5	64,0	8,4	1,6	37,7	43,8	45,6	43,4	37,9	42,3	46,4	45,6	48,5	47,7	58,5	60,1	62,9	68,2	66,9	63,1	73,8	73,1	64,7	67,4	
5:31	3.0	103225	REG	82,2	69,7	12,9	3,1	43,6	37,9	36,2	39,3	37,9	45,6	47,2	53,5	49,1	50,5	57,8	70,4	76,0	63,8	68,5	63,2	72,0	72,0	76,1	74,9	
6:25	3.0	103184	REG	78,9	70,2	8,8	3,2	45,2	39,1	46,9	37,7	39,8	42,4	43,1	41,5	48,8	47,9	48,7	75,1	74,1	65,0	59,9	57,0	58,6	61,9	69,7	65,6	
7:07	4.0	103217	REG	77,5	67,9	7,5	2,5	44,2	38,2	39,3	42,2	46,4	41,9	45,9	44,4	45,1	42,8	59,6	73,5	68,0	61,2	60,7	59,0	66,2	64,6	70,0	67,9	
7:11	9.0	103186	REG	73,2	60,1	4,6	1,0	37,4	35,0	39,0	43,3	45,4	45,3	36,6	42,5	47,5	49,5	50,4	55,7	63,5	63,9	55,5	53,5	69,5	62,2	61,3	64,8	
7:26	5.0	E6061	TCS	72,1	62,7	4,0	1,4	41,5	42,6	40,9	37,7	46,1	44,5	52,4	53,1	49,2	55,2	62,3	63,8	59,5	55,7	51,8	55,8	63,9	66,2	62,0	60,8	
7:39	8.0	103227	REG	74,6	57,7	5,4	0,8	42,7	37,9	31,8	40,6	47,1	45,1	42,8	44,2	41,1	44,0	48,1	53,1	57,8	58,0	59,1	56,8	62,2	61,6	68,5	71,9	
7:43	3.0	103188	REG	76,7	61,6	6,8	1,2	34,5	45,5	31,8	42,7	47,4	43,9	42,5	44,3	48,3	51,3	51,8	59,1	60,4	63,4	60,5	59,6	73,2	67,6	66,6	69,5	
8:08	5.0	103190	REG	77,1	68,1	7,1	2,5	43,5	40,0	38,4	32,7	37,9	43,9	40,4	38,8	45,6	47,6	51,9	73,2	71,6	59,7	58,6	53,8	57,3	62,9	68,6	65,3	
8:25	6.0	103219	REG	77,8	67,1	7,8	2,3	43,9	40,8	44,0	43,5	40,6	39,3	45,6	49,4	45,8	47,2	52,5	67,1	74,3	62,7	58,4	60,1	63,3	63,2	70,7	69,2	
8:29	5.0	103218	REG	73,8	60,0	4,9	1,0	46,4	41,7	38,2	37,2	44,4	41,2	41,1	48,3	49,6	50,9	47,8	57,1	62,5	61,3	63,4	58,5	63,6	64,1	65,6	69,4	
8:57	5.0	10343	REG	82,1	70,3	12,7	3,3	39,5	47,0	34,5	44,7	46,2	45,8	52,4	49,6	45,9	47,1	61,4	68,5	76,5	73,4	67,6	67,6	71,4	71,1	73,7	73,9	
9:00	6.0	103208	REG	72,7	60,0	4,3	1,0	33,4	36,2	45,1	40,6	42,0	46,1	44,4	50,6	53,0	51,7	47,3	54,5	62,7	61,2	55,8	68,4	57,2	62,5	66,4		
9:32	3.0	103229	REG	80,8	69,5	11,0	3,0	47,5	42,6	38,8	46,1	42,2	45,4	48,6	52,6	48,5	44,8	59,4	69,4	76,6	65,8	59,4	60,9	64,4	66,0	72,3	75,4	
9:44	3.0	123682	REG	79,4	70,0	9,4	3,1	35,9	41,6	48,6	39,0	37,4	44,0	40,2	51,1	46,3	49,6	54,8	75,0	73,0	66,3	62,9	59,3	66,6	64,1	69,4	70,9	
10:24	3.0	103191	REG	77,9	65,5	7,8	1,9	48,6	49,0	42,3	46,0	39,5	46,2	43,0	49,2	48,7	48,6	60,6	69,8	65,3	60,5	59,9	56,5	59,9	67,2	67,0	75,2	
11:30	1.0	103223	REG	58,3	53,4	0,8	0,5	41,2	41,1	40,0	42,5	46,5	37,9	43,2	46,9	44,1	44,4	44,9	48,5	50,6	47,5	43,2	44,1	45,8	44,2	43,8	45,8	
11:34	8.0	103220	REG	59,7	55,3	1,0	0,6	44,3	41,5	37,2	34,0	48,0	50,7	45,4	47,4	44,2	45,2	49,2	46,4	47,1	47,6	44,7	45,4	45,1	45,1	45,6	51,6	