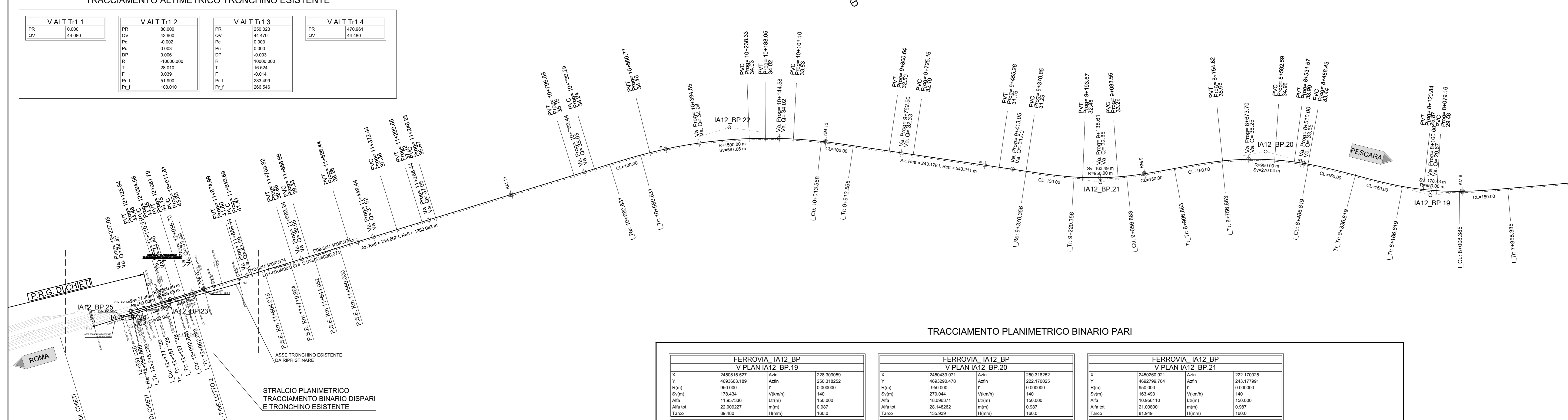


TRACCIAMENTO PLANIMETRICO TRONCHINO ESISTENTE

FERROVIA Tr1 V PLAN Tr1.1				FERROVIA Tr1 V PLAN Tr1.2				FERROVIA Tr1 V PLAN Tr1.3				FERROVIA Tr1 V PLAN Tr1.4			
X	2449174.728	Y	4690333.949	X	2449132.897	Y	4690173.910	X	2449094.439	Y	4690132.897	X	2449055.981	Y	4690094.439
R(m)	-3000.000	Sv(m)	46.118	R(m)	-3000.000	Sv(m)	46.118	R(m)	-3000.000	Sv(m)	46.118	R(m)	-3000.000	Sv(m)	46.118
Alfa	0.978546	Alfa tot	0.978546	Alfa	0.978546	Alfa tot	0.978546	Alfa	0.978546	Alfa tot	0.978546	Alfa	0.978546	Alfa tot	0.978546
Tarco	0.000	Tarco	0.000	Tarco	0.000	Tarco	0.000	Tarco	0.000	Tarco	0.000	Tarco	0.000	Tarco	0.000

TRACCIAMENTO ALTIMETRICO TRONCHINO ESISTENTE

V ALT Tr1.1		V ALT Tr1.2		V ALT Tr1.3		V ALT Tr1.4	
PR	0.000	PR	35.000	PR	250.000	PR	470.000
QV	44.080	QV	43.900	QV	44.470	QV	44.480
Pu	-4.602	Pu	0.000	Pu	0.000	Pu	0.000
Pv	0.000	Pv	0.000	Pv	0.000	Pv	0.000
DP	-10000.000	DP	-10000.000	DP	-10000.000	DP	-10000.000
R	28.010	R	16.524	R	16.524	R	16.524
T	0.039	T	0.014	T	0.014	T	0.014
F	51.990	F	221.489	F	221.489	F	221.489
Pv_I	108.010	Pv_I	266.546	Pv_I	266.546	Pv_I	266.546



TRACCIAMENTO PLANIMETRICO BINARIO PARI

FERROVIA IA12 BP V PLAN IA12 BP.19				FERROVIA IA12 BP V PLAN IA12 BP.20				FERROVIA IA12 BP V PLAN IA12 BP.21			
X	2450815.927	Y	4690360.189	X	2450430.071	Y	4690200.478	X	2450260.921	Y	4690030.764
R(m)	178.434	Sv(m)	11.93736	R(m)	178.434	Sv(m)	11.93736	R(m)	178.434	Sv(m)	11.93736
Alfa	22.009227	Alfa tot	0.987	Alfa	22.009227	Alfa tot	0.987	Alfa	22.009227	Alfa tot	0.987
Tarco	89.480	Tarco	190.0	Tarco	89.480	Tarco	190.0	Tarco	89.480	Tarco	190.0
DATI CINEMATICI CURVA				DATI CINEMATICI CURVA				DATI CINEMATICI CURVA			
Vmax (km/h)	140	dDd (mm)	38.889	Vmax (km/h)	140	dDd (mm)	38.889	Vmax (km/h)	140	dDd (mm)	38.889
Vmin (km/h)	80	dDd (mm)	1.00	Vmin (km/h)	80	dDd (mm)	1.00	Vmin (km/h)	80	dDd (mm)	1.00
E (mm)	83.453	dDd (mm/s)	20.284	E (mm)	83.453	dDd (mm/s)	20.284	E (mm)	83.453	dDd (mm/s)	20.284

TABELLA DEVIATOI

Deviatore	Stazione	Altezza	Altezza Totale
1	10+680.631	4.414	4.414
2	10+719.819	4.414	4.414
3	10+759.007	4.414	4.414
4	10+798.195	4.414	4.414
5	10+837.383	4.414	4.414
6	10+876.571	4.414	4.414
7	10+915.759	4.414	4.414
8	10+954.947	4.414	4.414
9	10+994.135	4.414	4.414
10	10+1033.323	4.414	4.414
11	10+1072.511	4.414	4.414
12	10+1111.699	4.414	4.414
13	10+1150.887	4.414	4.414
14	10+1190.075	4.414	4.414
15	10+1229.263	4.414	4.414
16	10+1268.451	4.414	4.414
17	10+1307.639	4.414	4.414
18	10+1346.827	4.414	4.414
19	10+1386.015	4.414	4.414
20	10+1425.203	4.414	4.414
21	10+1464.391	4.414	4.414
22	10+1503.579	4.414	4.414
23	10+1542.767	4.414	4.414
24	10+1581.955	4.414	4.414
25	10+1621.143	4.414	4.414
26	10+1660.331	4.414	4.414
27	10+1699.519	4.414	4.414
28	10+1738.707	4.414	4.414
29	10+1777.895	4.414	4.414
30	10+1817.083	4.414	4.414
31	10+1856.271	4.414	4.414
32	10+1895.459	4.414	4.414
33	10+1934.647	4.414	4.414
34	10+1973.835	4.414	4.414
35	10+2013.023	4.414	4.414
36	10+2052.211	4.414	4.414
37	10+2091.399	4.414	4.414
38	10+2130.587	4.414	4.414
39	10+2169.775	4.414	4.414
40	10+2208.963	4.414	4.414
41	10+2248.151	4.414	4.414
42	10+2287.339	4.414	4.414
43	10+2326.527	4.414	4.414
44	10+2365.715	4.414	4.414
45	10+2404.903	4.414	4.414
46	10+2444.091	4.414	4.414
47	10+2483.279	4.414	4.414
48	10+2522.467	4.414	4.414
49	10+2561.655	4.414	4.414
50	10+2600.843	4.414	4.414
51	10+2640.031	4.414	4.414
52	10+2679.219	4.414	4.414
53	10+2718.407	4.414	4.414
54	10+2757.595	4.414	4.414
55	10+2796.783	4.414	4.414
56	10+2835.971	4.414	4.414
57	10+2875.159	4.414	4.414
58	10+2914.347	4.414	4.414
59	10+2953.535	4.414	4.414
60	10+2992.723	4.414	4.414
61	10+3031.911	4.414	4.414
62	10+3071.099	4.414	4.414
63	10+3110.287	4.414	4.414
64	10+3149.475	4.414	4.414
65	10+3188.663	4.414	4.414
66	10+3227.851	4.414	4.414
67	10+3267.039	4.414	4.414
68	10+3306.227	4.414	4.414
69	10+3345.415	4.414	4.414
70	10+3384.603	4.414	4.414
71	10+3423.791	4.414	4.414
72	10+3462.979	4.414	4.414
73	10+3502.167	4.414	4.414
74	10+3541.355	4.414	4.414
75	10+3580.543	4.414	4.414
76	10+3619.731	4.414	4.414
77	10+3658.919	4.414	4.414
78	10+3698.107	4.414	4.414
79	10+3737.295	4.414	4.414
80	10+3776.483	4.414	4.414
81	10+3815.671	4.414	4.414
82	10+3854.859	4.414	4.414
83	10+3894.047	4.414	4.414
84	10+3933.235	4.414	4.414
85	10+3972.423	4.414	4.414
86	10+4011.611	4.414	4.414
87	10+4050.799	4.414	4.414
88	10+4090.987	4.414	4.414
89	10+4130.175	4.414	4.414
90	10+4169.363	4.414	4.414
91	10+4208.551	4.414	4.414
92	10+4247.739	4.414	4.414
93	10+4286.927	4.414	4.414
94	10+4326.115	4.414	4.414
95	10+4365.303	4.414	4.414
96	10+4404.491	4.414	4.414
97	10+4443.679	4.414	4.414
98	10+4482.867	4.414	4.414
99	10+4522.055	4.414	4.414
100	10+4561.243	4.414	4.414
101	10+4600.431	4.414	4.414
102	10+4639.619	4.414	4.414
103	10+4678.807	4.414	4.414
104	10+4717.995	4.414	4.414
105	10+4757.183	4.414	4.414
106	10+4796.371	4.414	4.414
107	10+4835.559	4.414	4.414
108	10+4874.747	4.414	4.414
109	10+4913.935	4.414	4.414
110	10+4953.123	4.414	4.414
111	10+4992.311	4.414	4.414
112	10+5031.499	4.414	4.414
113	10+5070.687	4.414	4.414
114	10+5109.875	4.414	4.414
115	10+5149.063	4.414	4.414
116	10+5188.251	4.414	4.414
117	10+5227.439	4.414	4.414
118	10+5266.627	4.414	4.414
119	10+5305.815	4.414	4.414
120	10+5345.003	4.414	4.414
121	10+5384.191	4.414	4.414
122	10+5423.379	4.414	4.414
123	10+5462.567	4.414	4.414
124	10+5501.755	4.414	4.414
125	10+5540.943	4.414	4.414
126	10+5580.131	4.414	4.414
127	10+5619.319	4.414	4.414
128	10+5658.507	4.414	4.414
129	10+5697.695	4.414	4.414
130	10+5736.883	4.414	4.414
131	10+5776.071	4.414	4.414
132	10+5815.259	4.414	4.414
133	10+5854.447	4.414	4.414
134	10+5893.635	4.414	4.414
135	10+5932.823	4.414	4.414
136	10+5972.011	4.414	4.414
137	10+6011.199	4.414	4.414
138	10+6050.387	4.414	4.414
139	10+6089.575	4.414	4.414
140	10+6128.763	4.414	4.414
141	10+6167.951	4.414	4.414
142	10+6207.139	4.414	4.414
143	10+6246.327	4.414	4.414
144	10+6285.515	4.414	4.414
145	10+6324.703	4.414	4.414
146	10+6363.891	4.414	4.414
147	10+6403.079	4.414	4.414
148	10+6442.267	4.414	4.414
149	10+6481.455	4.414	4.414
150	10+6520.643	4.414	4.414
151	10+6559.831	4.414	4.414
152	10+6599.019	4.414	4.414
153	10+6638.207	4.414	4.414
154	10+6677.395	4.414	4.414
155	10+6716.583	4.414	4.414
156	10+6755.771	4.414	4.414
157	10+6794.959	4.414	4.414
158	10+6834.147	4.414	4.414
159	10+6873.335	4.414	4.414
160	10+6912.523	4.414	4.414
161	10+6951.711	4.414	4.414
162	10+6990.899	4.414	4.414
163	10+7030.087	4.414	4.414
164	10+7069.275	4.414	4.414
165	10+7108.463	4.414	4.414
166	10+7147.651	4.414	4.414
167	10+7186.839	4.414	4.414
168	10+7226.027	4.414	4.414
169			